

GC-200

Integrally Geared Centrifugal Compressor



MODEL GC-200

Standard Specifications

| | |
|----------------------------|--|
| Gas | Air, CO ₂ , Biogas, Steam, H ₂ S, Fuel Gas, N ₂ , LNG, Custom |
| Flow Range | 100% to 65% of Rated Flow* |
| Pressure Range | 40 to 360 PSI / 3 to 25 bar, model specific |
| Maximum Case Pressure | 500 PSIG / 35 bar |
| Stages | 1 to 4 Stage Compression |
| Drive Type | Direct Coupled |
| Power Driver Options | Electric Motor, Steam Turbine, Combustion Engine |
| Gearbox | Helical Gear Set |
| Cooling Lubricant | Shell and Tube - Water Cooled |
| Cooling Intercooling | Shell and Tube - Water Cooled |
| Lubrication Options | Pressurized Oil |
| Bearings | Pinion - Tilt Pad Journal, Drive Journal |
| Enclosure | Optional |
| Sound Level | Job Specific |
| Sound Level with Enclosure | Job Specific |
| Filtration Rating (std) | 99% at 2 micron, or as required |
| Seals Air | Labyrinth Type |

Standard Materials of Construction

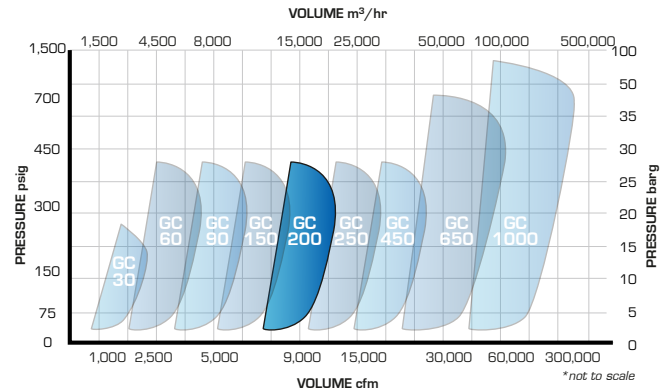
| | |
|--------------------------|---|
| Casing | Grey Iron FC25, GG25, Ductile, ASTM A536, A48 or Equal |
| Bearings | SCM440, ANSI 5140 Steel, Babbited, 40CR Alloy Casing |
| Impeller | 17-4PH SS, Titanium, Inconel |
| Inlet Guide Vanes | Stainless Steel 304 |
| Discharge Diffuser Vanes | Aluminum Alloy or Stainless Steel 304 |
| Gears | AISI 4140, Cr-Mo Alloy, Ni-Cr-Mo Alloy to AGMA 13 |
| Shaft | AISI 4140, Steel 10CrNiMo |
| Seals Air | Aluminum Alloy |
| Lubricant Cooler | Copper (C1220T), Cu + Ni(C7060T), Stainless Steel ST304 |
| Intercooler, Aftercooler | Ductile Housing with Copper (C1220T) Coils, Stainless Steel ST304 |
| Blower Base Skid | (Optional) ASTM A36, SS440 Structural Steel |
| Isolation Pads | St. SIS 1312 inertial dampening with rubber hardness 60 |
| Finish | 2 Part Epoxy Lone Star Blue RAL5005 |
| Enclosure | Aluminum, Galvanized Steel, Stainless |

Optional Testing & Certifications

| | |
|----------------------|--|
| API | API 617, API 672, API 614 |
| Electrical | UL 508A, CE, CSA |
| Hazardous Location | ATEX, Class 1 - Division 1- Division 2, Zone 0-2 |
| Balancing | ISO 1940- G2.5, ~ 4W/N API |
| Noise Level | OSHA 1910.95, ISO 2151:2005 |
| Performance | ASME PTC-10, ISO 5389 |
| Hydro Testing | 1.5 Time MAWP |
| Overspeed Testing | Optional |
| Positive Material ID | XRF, OES, Material Certification |
| NACE Compliance | Optional |
| Special Coatings | Optional |

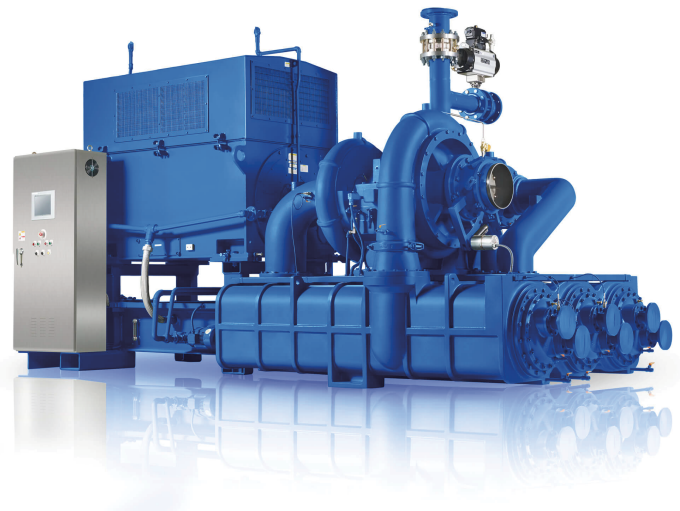
Service

Air, Gas, Pressure, Vacuum



Control Options

| | |
|--------------------|--|
| Control Methods | Variable Inlet Guide Vane, speed control, blow off, or combination |
| Local Controller | sLOC™ Standard - Custom for Allen Bradley, Modicon, Siemens or Other |
| HMI | sLOC™ Standard or Custom HMI |
| Remote Monitoring | sLINK™ or Custom |
| Control Set Points | Pressure, Flow, Power, Custom Input |



* Information is approximate and can change without notice
 * Air Performance Based on 1 Atm, 68F/20C, 36% RH and 3550 rpm