

GL-15

Integrally Geared Single Stage Blower



LONE STAR
TURBO

MODEL GL-15

Standard Specifications

Gas	Air, Steam, H2S, Biogas, Fuel Gas, CO2, N2, LNG, Custom
Flow Range	100% to 35% of Rated Flow with Combination Control
Pressure Range	Up to 30 PSIG / 2 bar
Maximum Case Pressure	50 PSIG / 3.5 bar
Stages	Single Stage
Drive Type	Direct Coupled
Power Driver Options	Electric Motor, Steam Turbine, Combustion Engine
Gearbox	Helical Gear Set
Cooling Lubricant	Lubricant Cooling (Air or Liquid)
Lubrication Options	Pressurized Oil
Bearings	Pinion - Tilt Pad Journal, Drive Journal
Enclosure	Optional
Sound Level	Job Specific
Sound Level with Enclosure	Job Specific
Filtration Rating (std)	99% at 2 micron, or as required
Seals Air	Labyrinth Type

Standard Materials of Construction

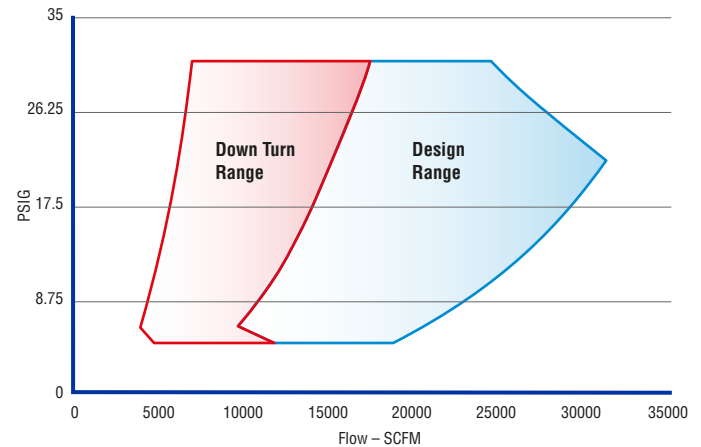
Casing	Grey Iron GG25, Ductile, ASTM A536, A48 or Equal
Bearings	ANSI 5140 Steel, Babbited, 40CR Alloy Casing
Impeller	AlCu2MgNi Alloy (annodized), 17-4PH, Titanium, Inconel
Inlet Guide Vanes	Stainless Steel 316
Discharge Diffuser Vanes	Stainless Steel 316
Gears	AISI 8620, Steel 10CrNiMo to AGMA 12/13
Shaft	Steel 10CrNiMo
Seals Air	ASTM B86 Z25631 Zinc Alloy Aluminum
Seals Gas	ASTM C695 Molded Graphite
Blower Base Skid	ASTM A36 Structural Steel
Isolation Pads	St. SIS 1312 inertial dampening with rubber hardness 60
Finish	2 Part Epoxy Lone Star Blue RAL5005
Enclosure	Aluminum, Galvanized Steel, Stainless

Optional Testing & Certifications

API	API 617, API 672, API 614
Electrical	UL 508A, CE, CSA
Hazardous Location	ATEX, Class1 - Division 1- Division 2, Zone 0-2
Balancing	ISO 1940 - G2.5, ~4W/N API
Noise Level	OSHA 1910.95, ISO 2151:2004
Performance	ASME PTC-10, PTC-13, ISO 5389
Hydro Testing	1.5 Time MAWP
Overspeed Testing	Optional
Positive Material ID	XRF, OES, Material Certification
NACE Compliance	Optional
Special Coatings	Optional

Service

Air, Gas, Pressure, Vacuum

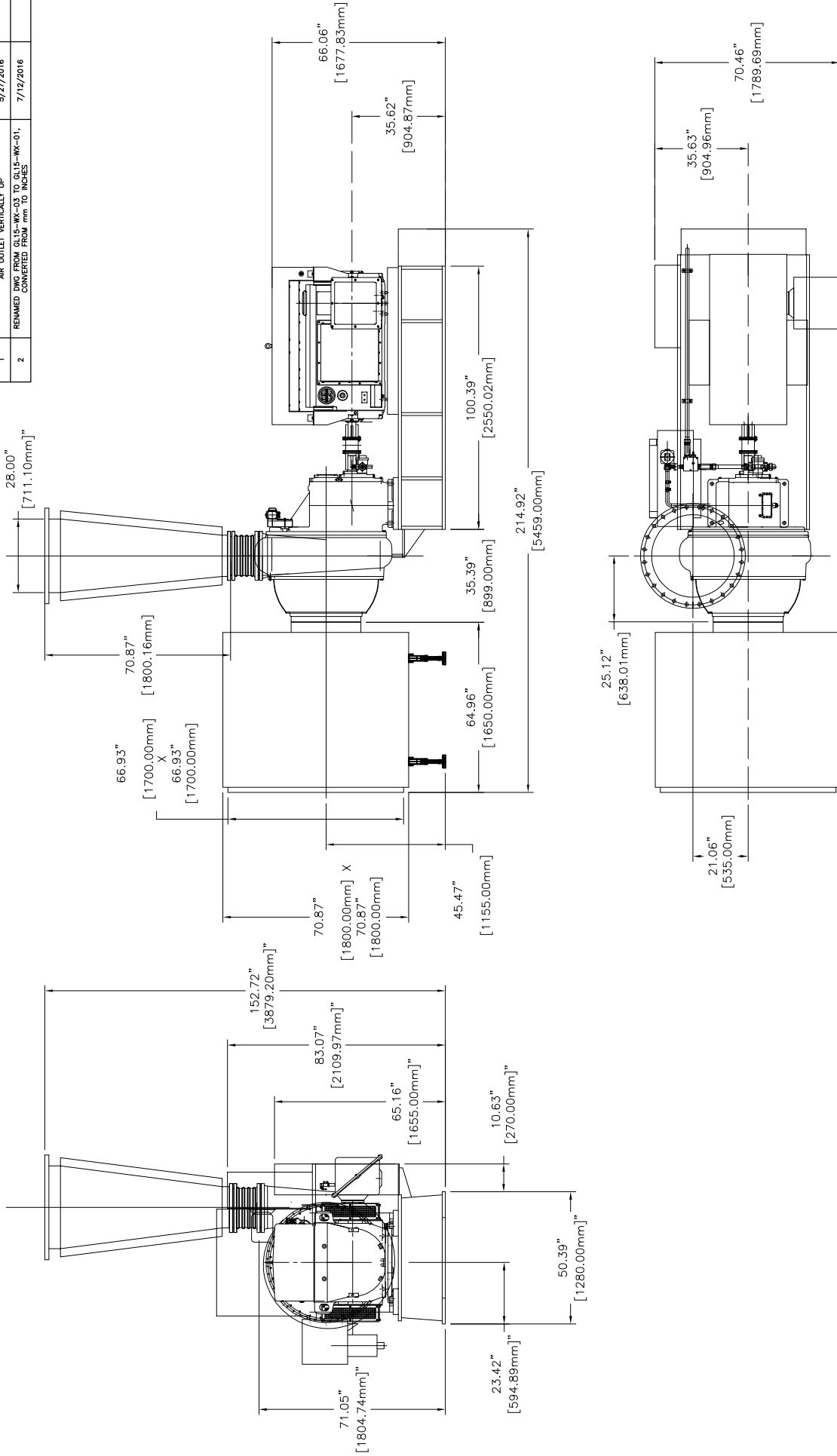


Control Options

Control Methods	Variable Inlet and Discharge Guide Vane, speed control, blow off, or combination
Local Controller	sLOC™ Standard - Custom for Allen Bradley, Modicon, Siemens or Other
HMI	sLOC™ Standard or Custom HMI
Remote Monitoring	sLINK™ or Custom
Control Set Points	Pressure, Flow, Power, Custom Input



REV	DESCRIPTION	DATE	APPROVED
1	AIR OUTLET VERTICALLY UP	5/27/2016	
2	REMOVED DIM FROM GL15-WX-03 TO GL15-WX-01, CONVERTED FROM MM TO INCHES	7/12/2016	



- NOTES:
- BLOWER EQUIPPED WITH HIGH VOLTAGE MOTOR (SIEMENS).
 - BLOWER INSTALLED BY EXPANSION BOLTS.

MOTOR	"A"	"B"	"C"	"H"	WEIGHT (LBS)
475HP-675HP	100.39	214.92	70.46	66.06	15,653
750HP	100.39	214.92	70.46	66.06	15,873
850HP	100.39	214.92	70.46	66.06	16,314



LONE STAR BLOWER

DRAWING IS FOR REFERENCE ONLY UNLESS SPECIFIED AS RELEASED.

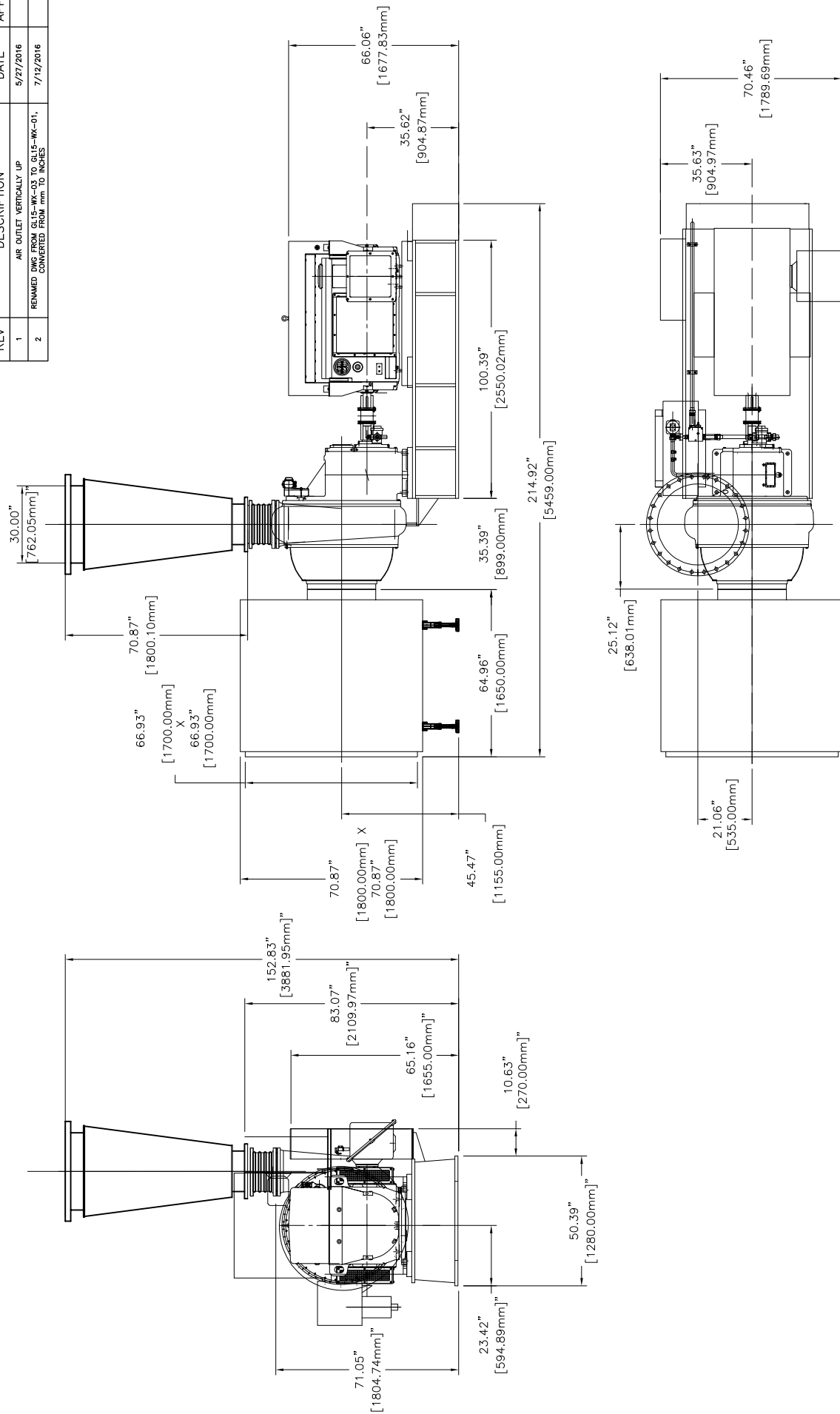
APPROVALS	TITLE
DRAWN: BW	GL-15 GEARED TURBO
CHECK:	GENERAL ASSEMBLY 28" CONE
ENGINEER:	
MANUFACTURING:	
CONTROL:	
APPROVED:	

SIZE	CAGE CODE	DWG NUMBER	REV
A	-	GL15-WX-01	02



REVISION HISTORY

REV	DESCRIPTION	DATE	APPROVED
1	AIR OUTLET VERTICALLY UP	5/27/2016	
2	REMOVED DIM FROM GL15-WX-01 TO GL15-WX-01, REMAINED CONVERTED FROM mm TO INCHES	7/12/2016	

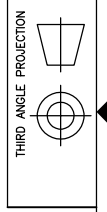


DRAWING IS FOR REFERENCE ONLY UNLESS SPECIFIED AS RELEASED.

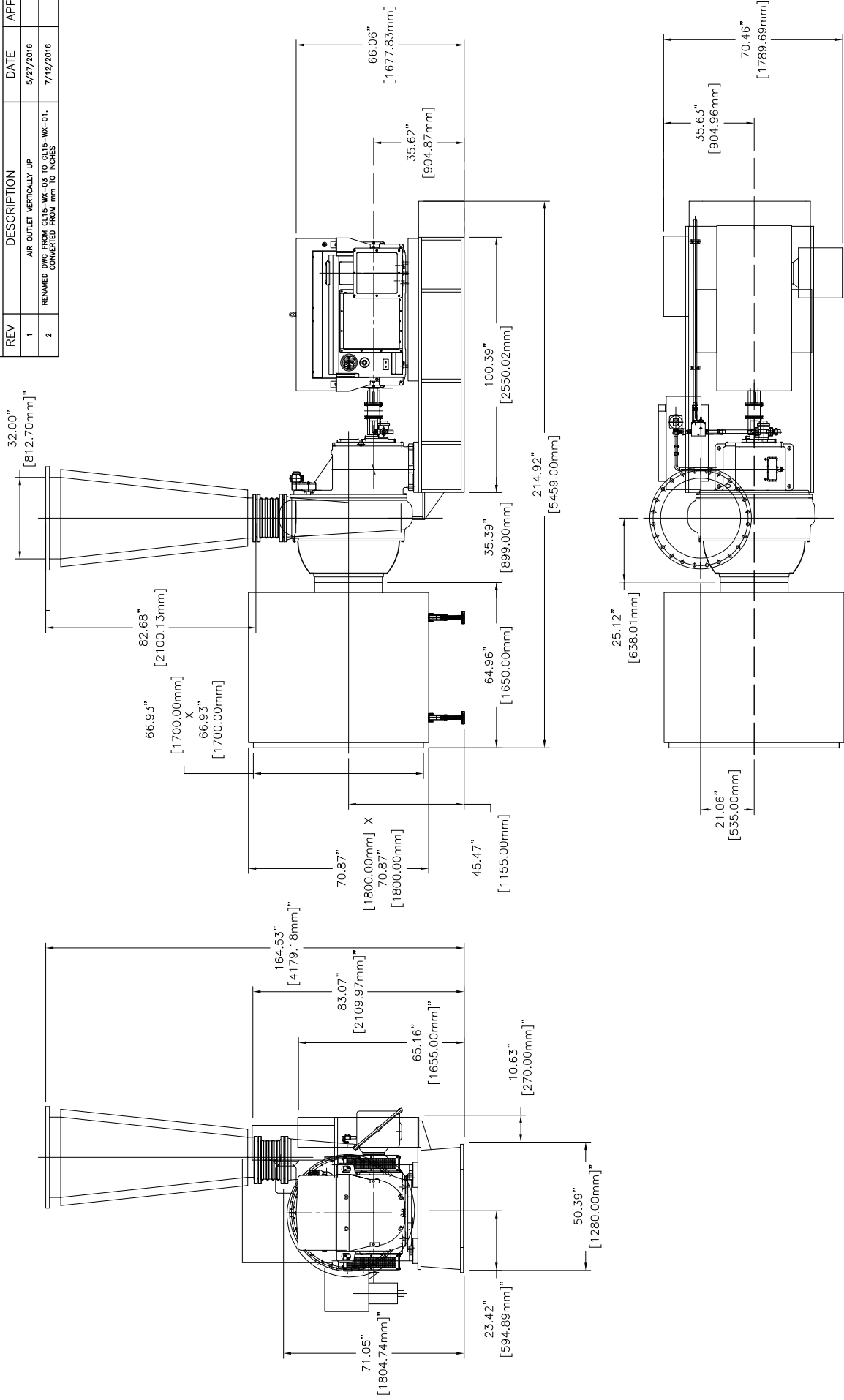
APPROVALS		TITLE
DRAWN	BW	GL-15 GEARED TURBO
CHECK		GENERAL ASSEMBLY 30" CONE
ENGINEER		
MANUFACTURING		
CONTROL		
APPROVED		
SCALE	A -	GL15-WX-01
		REV 02
		SHEET 1 OF 1

NOTES:
 1. BLOWER EQUIPPED WITH HIGH VOLTAGE MOTOR (SIEMENS).
 2. BLOWER INSTALLED BY EXPANSION BOLTS.

MOTOR	DIMENSIONS & WEIGHTS BY MOTOR SIZE				
	"A"	"B"	"C"	"H"	WEIGHT (LBS)
475HP-675HP	100.39	214.92	70.46	66.06	15,653
750HP	100.39	214.92	70.46	66.06	15,873
850HP	100.39	214.92	70.46	66.06	16,314



REV	DESCRIPTION	DATE	APPROVED
1	AIR OUTLET VERTICALLY UP	5/27/2016	
2	REMOVED DIM FROM GL15-WX-03 TO GL15-WX-01, CONVERTED FROM MM TO INCHES	7/12/2016	



REV		DESCRIPTION	DATE	APPROVED
1		AIR OUTLET VERTICALLY UP	5/27/2016	
2		REMOVED DIM FROM GL15-WX-03 TO GL15-WX-01, CONVERTED FROM MM TO INCHES	7/12/2016	

DRAWING IS FOR REFERENCE ONLY UNLESS SPECIFIED AS RELEASED.		APPROVALS	
DRAWN	BW	TITLE	07/12/2016
CHECK			
ENGINEER			
MANUFACTURING			
CONTROL			
APPROVED			

DRAWING IS FOR REFERENCE ONLY UNLESS SPECIFIED AS RELEASED.		APPROVALS	
DRAWN	BW	TITLE	07/12/2016
CHECK			
ENGINEER			
MANUFACTURING			
CONTROL			
APPROVED			

DRAWING IS FOR REFERENCE ONLY UNLESS SPECIFIED AS RELEASED.		APPROVALS	
DRAWN	BW	TITLE	07/12/2016
CHECK			
ENGINEER			
MANUFACTURING			
CONTROL			
APPROVED			

DRAWING IS FOR REFERENCE ONLY UNLESS SPECIFIED AS RELEASED.		APPROVALS	
DRAWN	BW	TITLE	07/12/2016
CHECK			
ENGINEER			
MANUFACTURING			
CONTROL			
APPROVED			

NOTES:
 1. BLOWER EQUIPPED WITH HIGH VOLTAGE MOTOR (SIEMENS).
 2. BLOWER INSTALLED BY EXPANSION BOLTS.

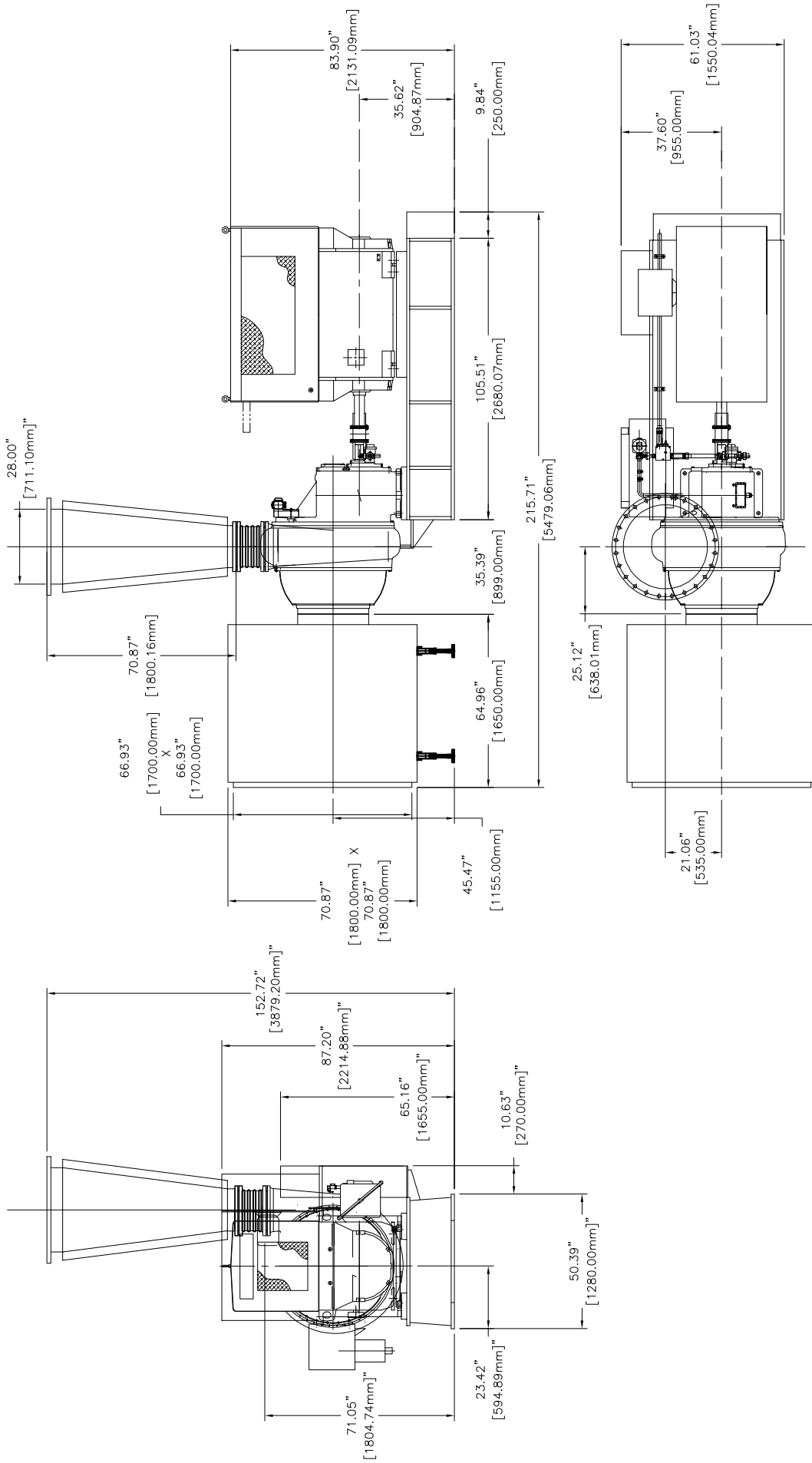
DIMENSIONS & WEIGHTS BY MOTOR SIZE					
MOTOR	"A"	"B"	"C"	"H"	WEIGHT (LBS)
475HP-675HP	100.39	214.92	70.46	66.06	15,653
750HP	100.39	214.92	70.46	66.06	15,873
850HP	100.39	214.92	70.46	66.06	16,314

SCALE: 1 OF 1

GL-15 GEARED TURBO
 GENERAL ASSEMBLY 32" CONE
 DWG NUMBER: GL15-WX-01
 REV: 02

LONE STAR BLOWER

REVISION HISTORY			
REV	DESCRIPTION	DATE	APPROVED
1	AIR OUTLET VERTICALLY UP	5/27/2016	
2	REMOVED DIM FROM GL15-WX-03 TO GL15-WX-01, mm TO INCHES	7/12/2016	



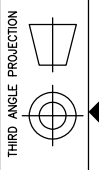
DRAWING IS FOR REFERENCE ONLY UNLESS SPECIFIED AS RELEASED.		APPROVALS	
DRAWN	BW	TITLE	07/12/2016
CHECK			
ENGINEER			
MANUFACTURING			
CONTROL			
APPROVED			

LONE STAR BLOWER	
GL-15 GEARED TURBO	GL-15 GEARED TURBO
GENERAL ASSEMBLY 28" CONE	GENERAL ASSEMBLY 28" CONE
SIZE	CAGE CODE
A	GL15-WX-01
SCALE	SHEET 1 OF 1

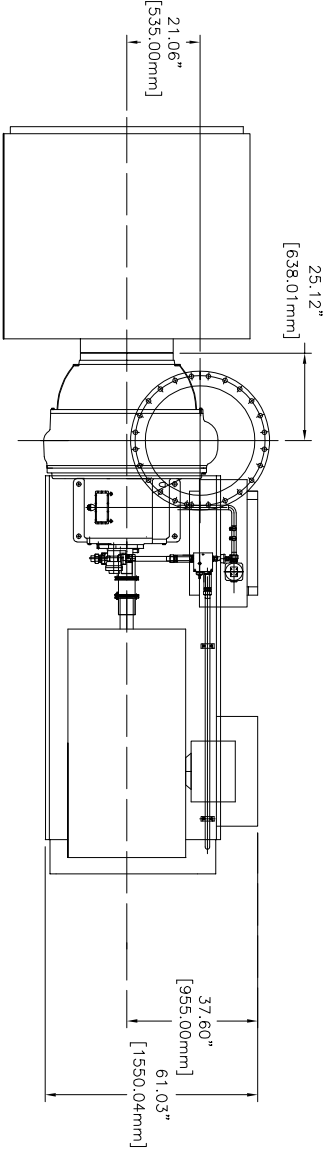
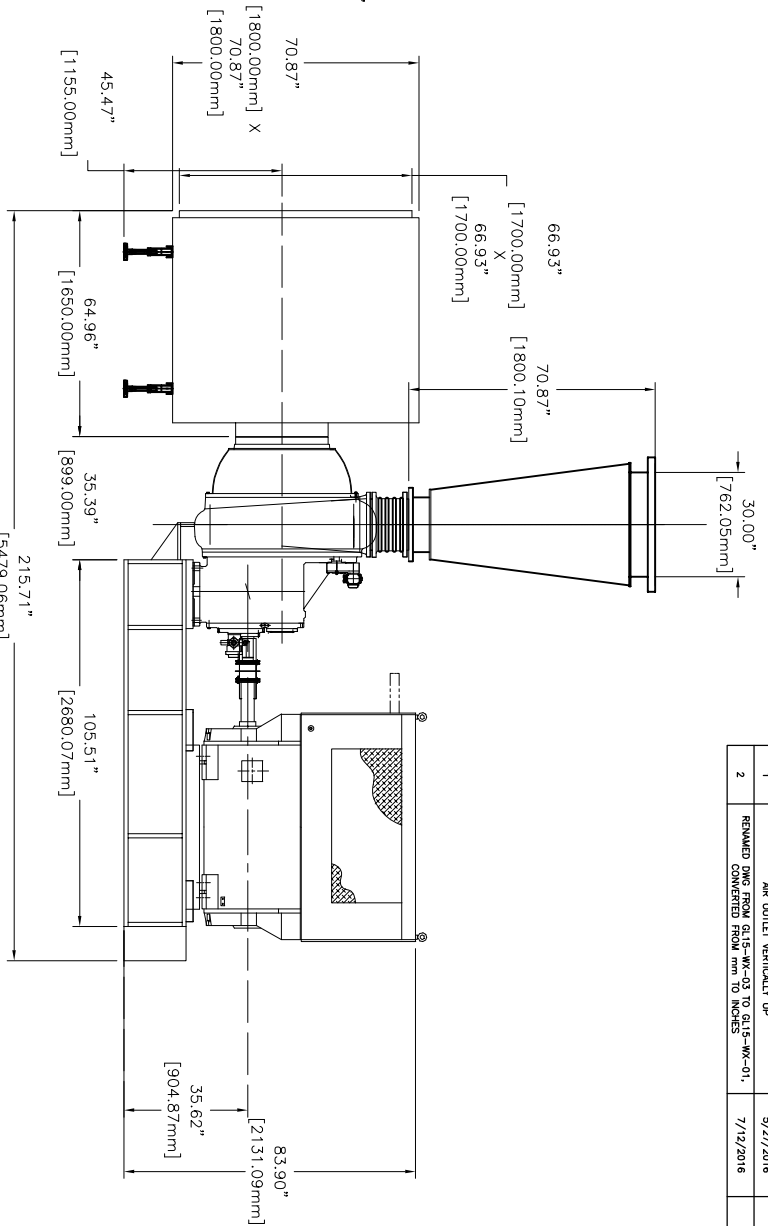
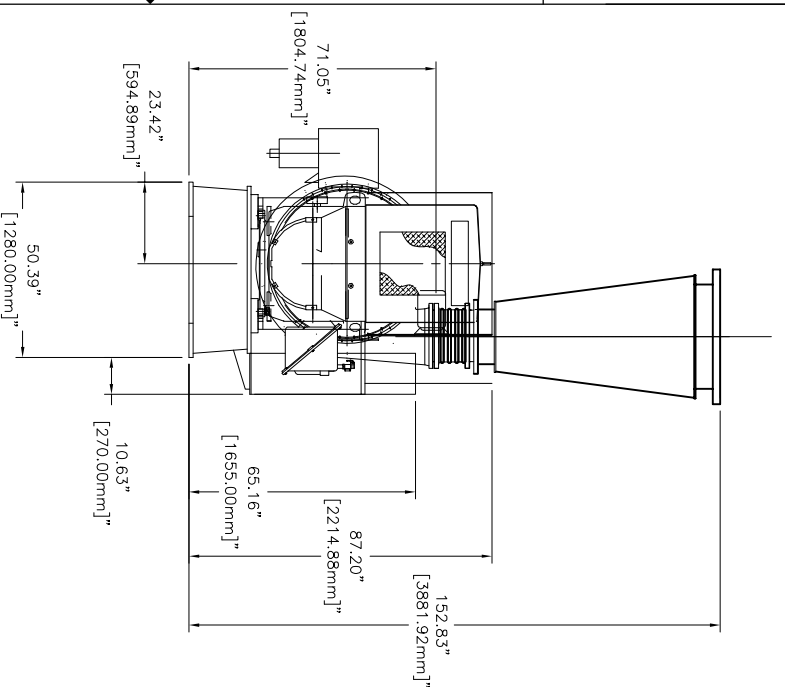
NOTES:

- BLOWER EQUIPPED WITH HIGH VOLTAGE MOTOR (SIEMENS).
- BLOWER INSTALLED BY EXPANSION BOLTS.

DIMENSIONS & WEIGHTS BY MOTOR SIZE					
MOTOR	"A"	"B"	"C"	"H"	WEIGHT (LBS)
950HP	105.51	215.71	61.03	83.90	17,637
1075HP	105.51	215.71	61.03	83.90	17,857
1250HP	105.51	215.71	61.03	83.90	18,188
1350HP	105.51	215.71	61.03	83.90	18,409

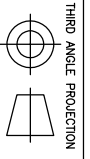


REVISION HISTORY			
REV	DESCRIPTION	DATE	APPROVED
1	AIR OUTLET VERTICALLY UP	5/27/2016	
2	REMOVED DIM FROM Q15-WX-03 TO S15-WX-01, CONVERTED FROM mm TO INCHES	7/19/2016	



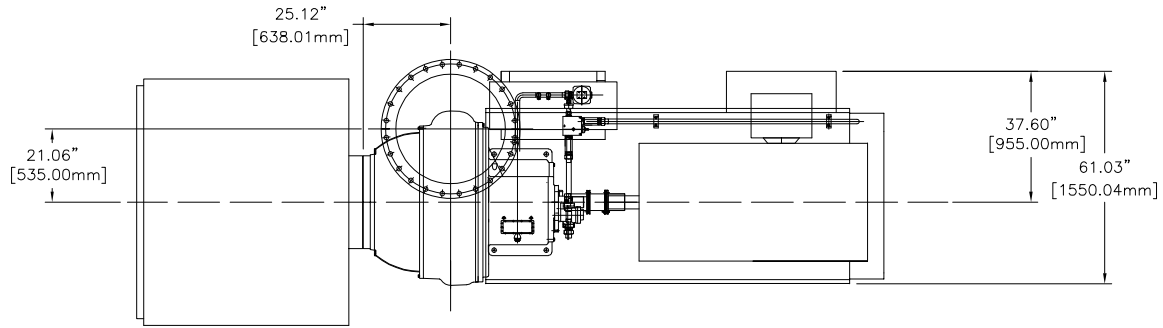
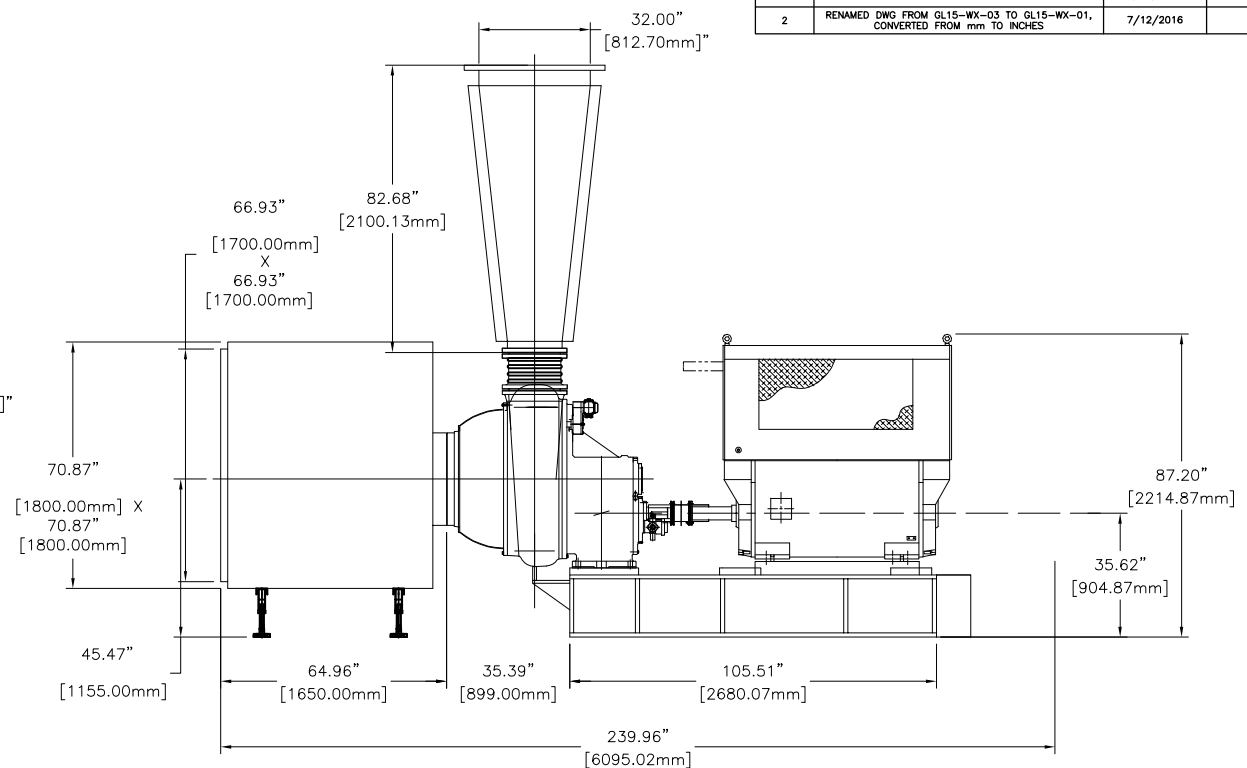
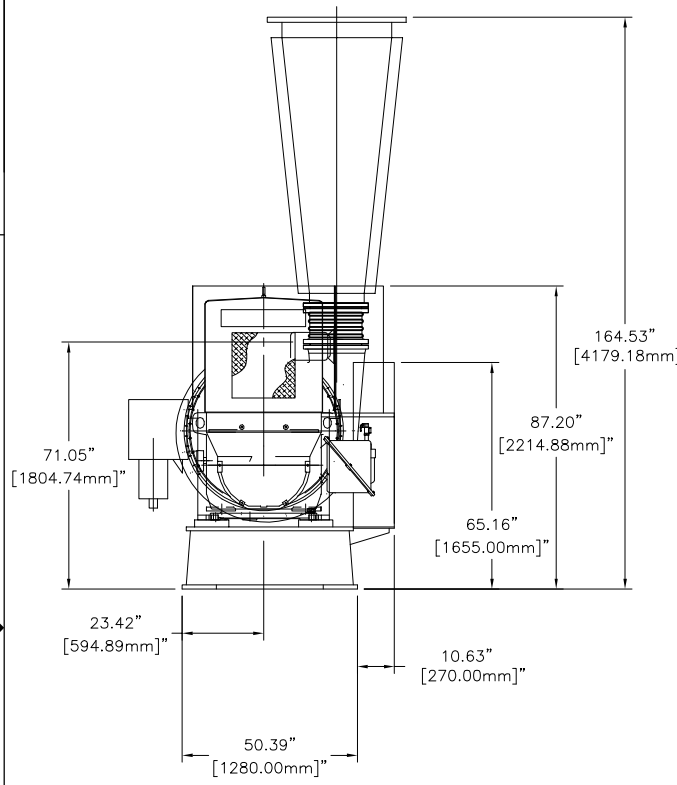
NOTES:
 1. BLOWER EQUIPPED WITH HIGH VOLTAGE MOTOR (SIEMENS).
 2. BLOWER INSTALLED BY EXPANSION BOLTS.

DIMENSIONS & WEIGHTS BY MOTOR SIZE					
MOTOR	"A"	"B"	"C"	"H"	WEIGHT (LBS)
950HP	105.51	215.71	61.03	83.90	17,637
1075HP	105.51	215.71	61.03	83.90	17,857
1250HP	105.51	215.71	61.03	83.90	18,188
1350HP	105.51	215.71	61.03	83.90	18,409



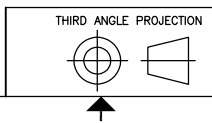
DRAWING IS FOR REFERENCE ONLY UNLESS SPECIFIED AS RELEASED.		APPROVALS			LONE STAR BLOWER TITLE GL-15 GEARED TURBO GENERAL ASSEMBLY 30" CONE
DRAWN	BW	07/12/2016			
CHECK					
ENGINEER				SIZE	A
MANUFACTURING				DWG CODE	GL15-WX-01
CONTROL				SCALE	
APPROVED				SHEET	1 OF 1
				REV	02

REVISION HISTORY			
REV	DESCRIPTION	DATE	APPROVED
1	AIR OUTLET VERTICALLY UP	5/27/2016	
2	RENAMED DWG FROM GL15-WX-03 TO GL15-WX-01, CONVERTED FROM mm TO INCHES	7/12/2016	



- NOTES:
 1. BLOWER EQUIPPED WITH HIGH VOLTAGE MOTOR (SIEMENS).
 2. BLOWER INSTALLED BY EXPANSION BOLTS.

DIMENSIONS & WEIGHTS BY MOTOR SIZE					
MOTOR	"A"	"B"	"C"	"H"	WEIGHT (LBS)
950HP	105.51	215.71	61.03	83.90	17,637
1075HP	105.51	215.71	61.03	83.90	17,857
1200HP	105.51	215.71	61.03	83.90	18,188
1350HP	105.51	215.71	61.03	83.90	18,409



DRAWING IS FOR REFERENCE ONLY UNLESS SPECIFIED AS RELEASED.

APPROVALS		
DRAWN	BW	07/12/2016
CHECK		
ENGINEER		
MANUFACTURING		
CONTROL		
APPROVED		

LONE STAR BLOWER

TITLE
 GL-15 GEARED TURBO
 GENERAL ASSEMBLY 32" CONE

SIZE	CAGE CODE	DWG NUMBER	REV
A	-	GL15-WX-01	02
SCALE		SHEET 1 OF 1	