

GL-8

Integrally Geared Single Stage Blower



LONE STAR
TURBO

MODEL GL-8

Standard Specifications

Gas	Air, Steam, H2S, Biogas, Fuel Gas, CO2, N2, LNG, Custom
Flow Range	100% to 35% of Rated Flow with Combination Control
Pressure Range	Up to 30 PSIG / 2 bar
Maximum Case Pressure	50 PSIG / 3.5 bar
Stages	Single Stage
Drive Type	Direct Coupled
Power Driver Options	Electric Motor, Steam Turbine, Combustion Engine
Gearbox	Helical Gear Set
Cooling Lubricant	Lubricant Cooling (Air or Liquid)
Lubrication Options	Pressurized Oil
Bearings	Pinion - Tilt Pad Journal, Drive Journal
Enclosure	Optional
Sound Level	Job Specific
Sound Level with Enclosure	Job Specific
Filtration Rating (std)	99% at 2 micron, or as required
Seals Air	Labyrinth Type

Standard Materials of Construction

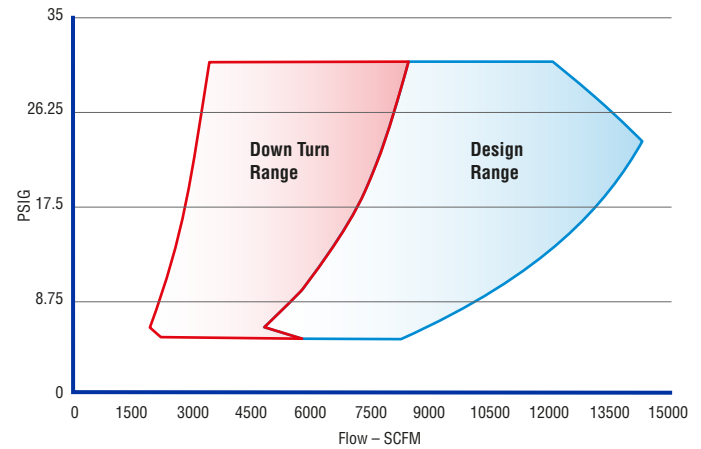
Casing	Grey Iron GG25, Ductile, ASTM A536, A48 or Equal
Bearings	ANSI 5140 Steel, Babbited, 40CR Alloy Casing
Impeller	AlCu2MgNi Alloy (annodized), 17-4PH, Titanium, Inconel
Inlet Guide Vanes	Stainless Steel 316
Discharge Diffuser Vanes	Stainless Steel 316
Gears	AISI 8620, Steel 10CrNiMo to AGMA 12/13
Shaft	Steel 10CrNiMo
Seals Air	ASTM B86 Z25631 Zinc Alloy Aluminum
Seals Gas	ASTM C695 Molded Graphite
Blower Base Skid	ASTM A36 Structural Steel
Isolation Pads	St. SIS 1312 inertial dampening with rubber hardness 60
Finish	2 Part Epoxy Lone Star Blue RAL5005
Enclosure	Aluminum, Galvanized Steel, Stainless

Optional Testing & Certifications

API	API 617, API 672, API 614
Electrical	UL 508A, CE, CSA
Hazardous Location	ATEX, Class1 - Division 1- Division 2, Zone 0-2
Balancing	ISO 1940 - G2.5, ~4W/N API
Noise Level	OSHA 1910.95, ISO 2151:2004
Performance	ASME PTC-10, PTC-13, ISO 5389
Hydro Testing	1.5 Time MAWP
Overspeed Testing	Optional
Positive Material ID	XRF, OES, Material Certification
NACE Compliance	Optional
Special Coatings	Optional

Service

Air, Gas, Pressure, Vacuum

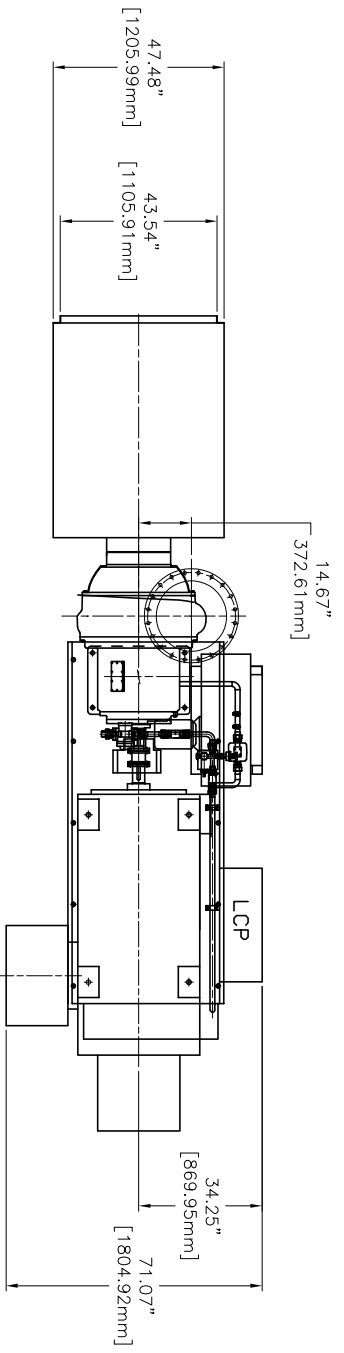
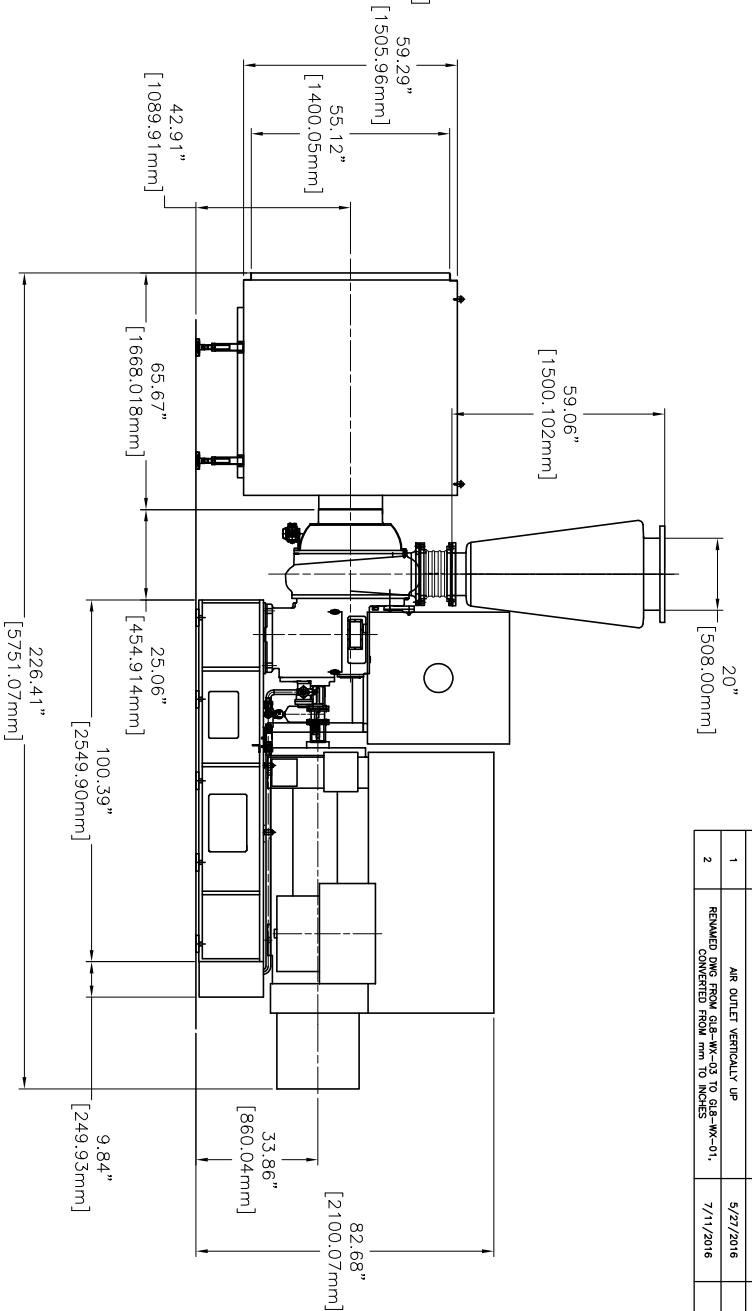
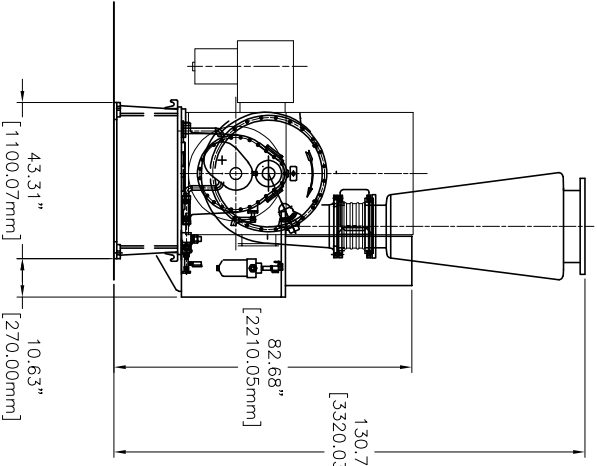


Control Options

Control Methods	Variable Inlet and Discharge Guide Vane, speed control, blow off, or combination
Local Controller	sLOC™ Standard - Custom for Allen Bradley, Modicon, Siemens or Other
HMI	sLOC™ Standard or Custom HMI
Remote Monitoring	sLINK™ or Custom
Control Set Points	Pressure, Flow, Power, Custom Input



REVISION HISTORY			
REV	DESCRIPTION	DATE	APPROVED
1	AIR OUTLET VERTICALLY UP	5/27/2016	
2	REMOVED DIMS FROM 4.5, 10, 13, 15, 18, 20, 23 TO 0.125 INCHES CONVERTED FROM MM TO INCHES	7/11/2016	



- NOTES:
- BLOWER OUTLET ANGLE ADJUSTABLE EVERY 15° RADIALY.
 - BLOWER INSTALLED BY EXPANSION BOLTS.

DIMENSIONS & WEIGHTS BY MOTOR SIZE					
MOTOR	"A"	"B"	"C"	"H"	WEIGHT (LBS)
475HP-675HP	100.39	226.41	71.07	82.68	13,625
750HP	100.39	226.41	71.07	82.68	13,845
925HP	100.39	226.41	71.07	82.68	14,286

THIRD ANGLE PROJECTION

DRAWING IS FOR REFERENCE ONLY UNLESS SPECIFIED AS RELEASED.	
DRAWN	BW
CHECK	
ENGINEER	
MANUFACTURING	
CONTROL	
APPROVED	

LONE STAR BLOWER

TITLE

GL-8 GEARED TURBO
GENERAL ASSEMBLY 20" CONE

SCALE

A

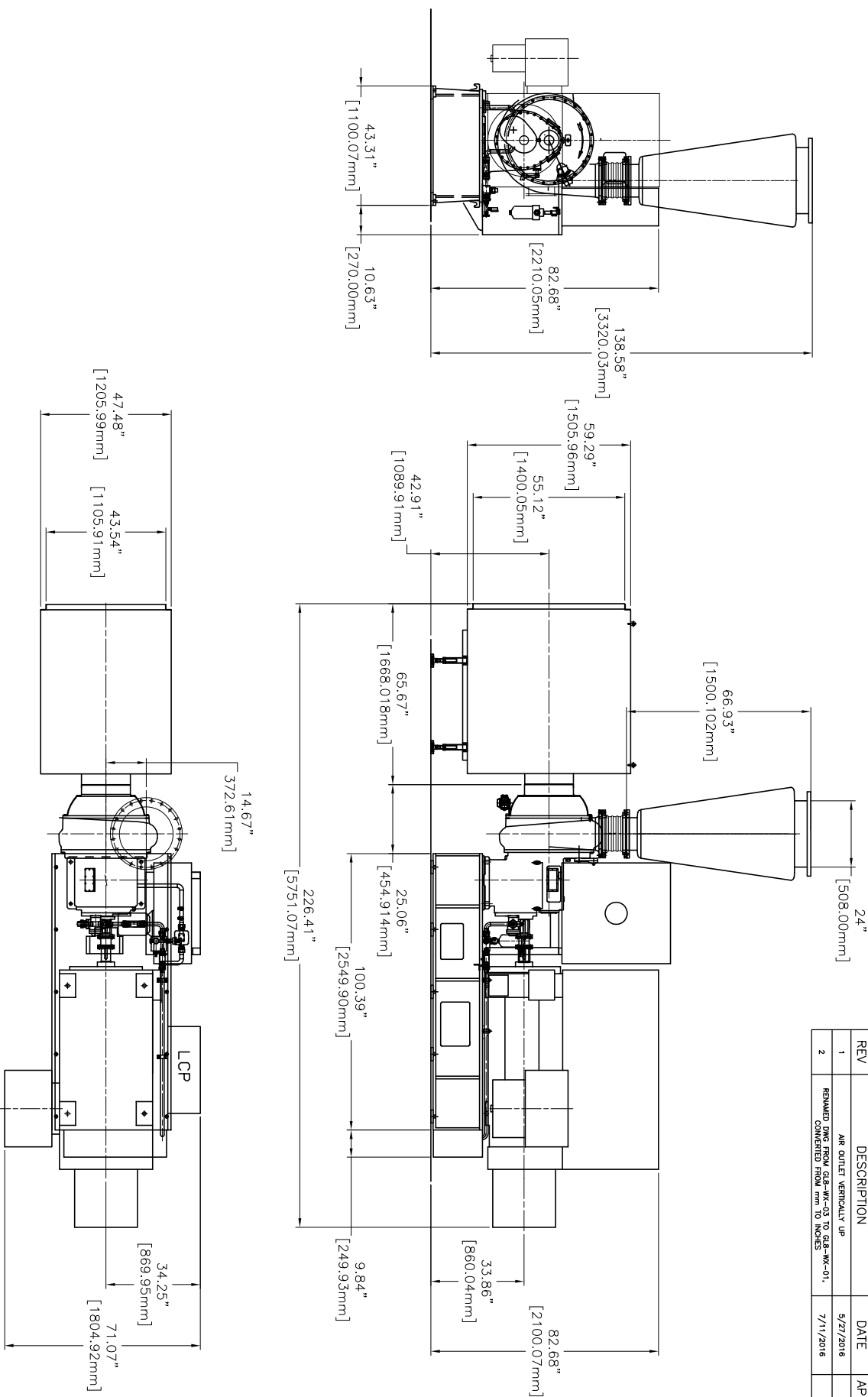
GL8-WX-01

SHEET 1 OF 1

REV

02

REVISION HISTORY			
REV	DESCRIPTION	DATE	APPROVED
1	AIR OUTLET VERTICALLY UP	5/27/2016	
2	ROUND PING FROM 0.5 IN. TO 0.375 IN. W/ 0.125 IN. RADIUS CONVERTED FROM MM TO INCHES	7/11/2016	



- NOTES:
- BLOWER OUTLET ANGLE ADJUSTABLE EVERY 15° RADIALY.
 - BLOWER INSTALLED BY EXPANSION BOLTS.

DIMENSIONS & WEIGHTS BY MOTOR SIZE					
MOTOR	"A"	"B"	"C"	"H"	WEIGHT (LBS)
475HP-675HP	100.39	226.41	71.07	82.68	13,625
750HP	100.39	226.41	71.07	82.68	13,845
925HP	100.39	226.41	71.07	82.68	14,286

DRAWING IS FOR REFERENCE ONLY
UNLESS SPECIFIED AS RELEASED.

APPROVALS

DRAWN	BW	07/011/2016
CHECK		
ENGINEER		
MANUFACTURING		
CONTROL		
APPROVED		

THIRD ANGLE PROJECTION

SCALE

SHEET 1 OF 1

REV 02

LONE STAR BLOWER

TITLE

GL-8 GEARED TURBO
GENERAL ASSEMBLY 24" CONE

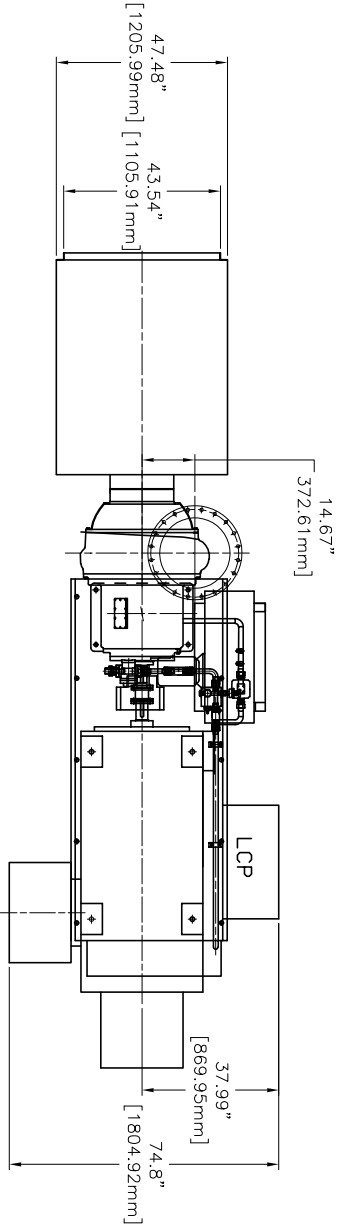
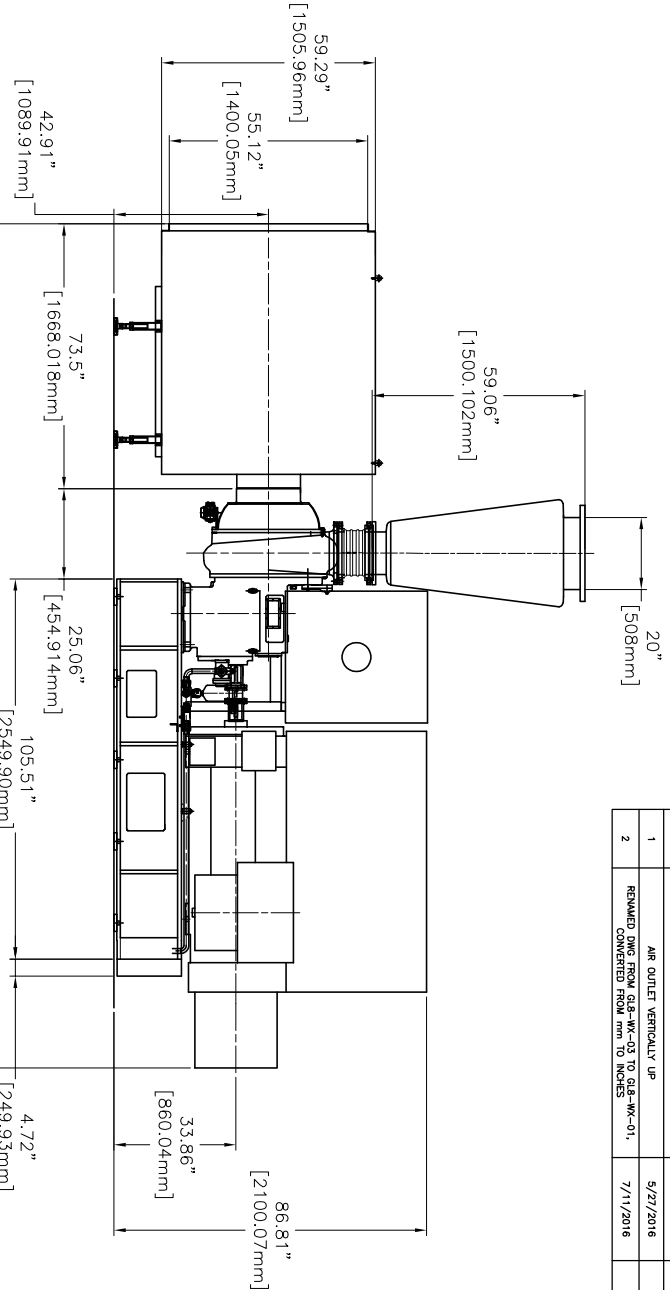
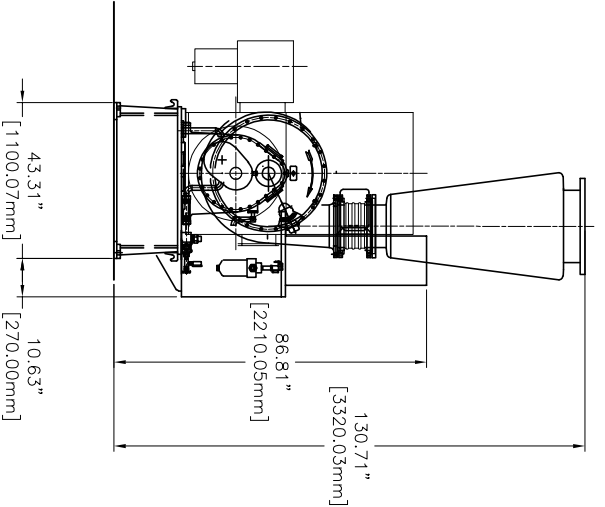
SIZE

CAGE CODE

DWG NUMBER

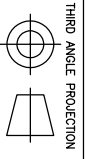
GL8-WX-01


REVISION HISTORY			
REV	DESCRIPTION	DATE	APPROVED
1	AIR OUTLET VERTICALLY UP	5/27/2016	
2	REMOVED DIMS FROM 0.5 INCH TO 0.125 INCH CONVERTED FROM MM TO INCHES	7/11/2016	



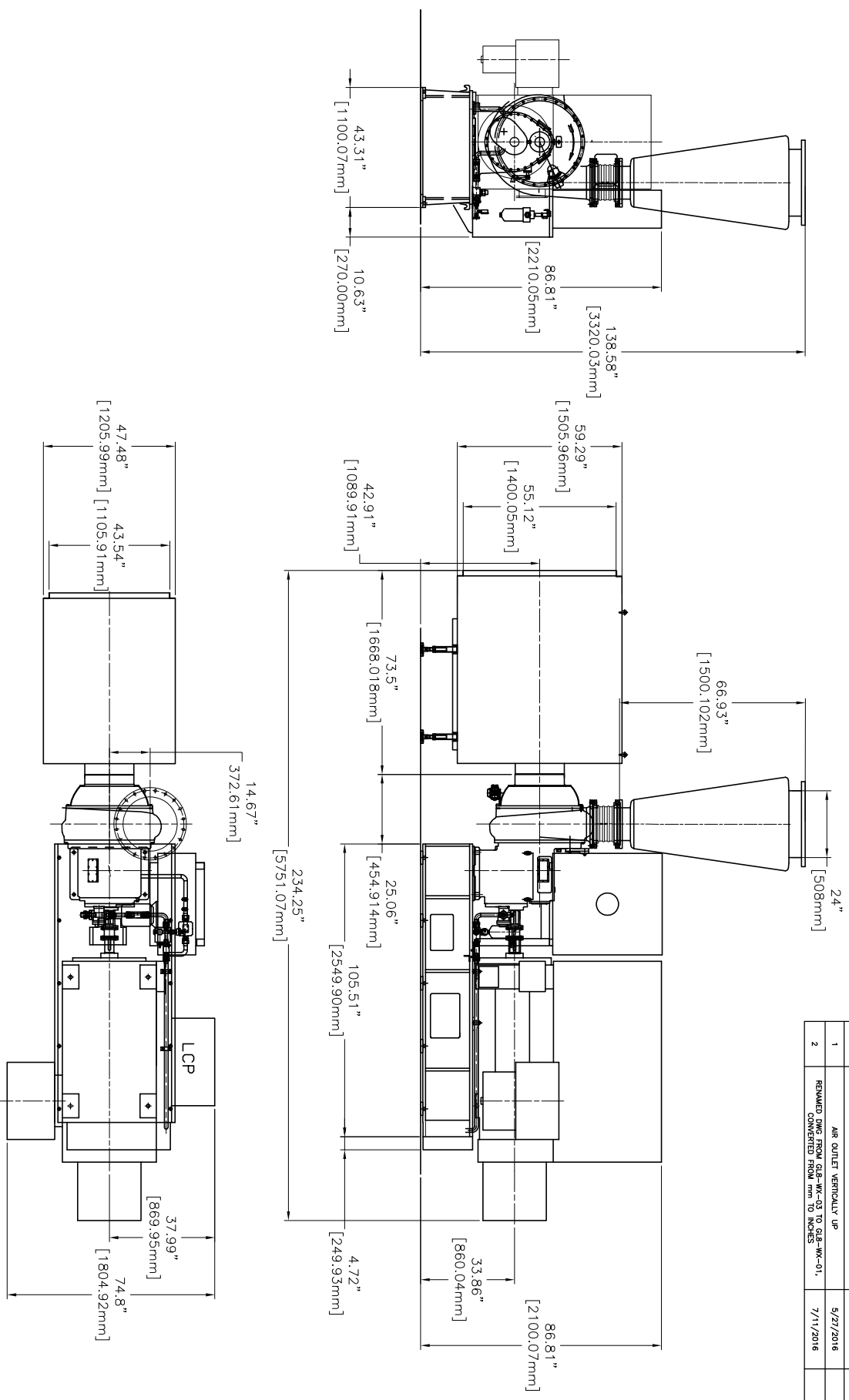
- NOTES:
- BLOWER OUTLET ANGLE ADJUSTABLE EVERY 15° RADially.
 - BLOWER INSTALLED BY EXPANSION BOLTS.

DIMENSIONS & WEIGHTS BY MOTOR SIZE					
MOTOR	"A"	"B"	"C"	"H"	WEIGHT (LBS)
950HP	105.51	234.25	74.80	86.81	15,609
1075HP	105.51	234.25	74.80	86.81	15,829



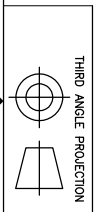
DRAWING IS FOR REFERENCE ONLY UNLESS SPECIFIED AS RELEASED.		APPROVALS		 LONE STAR BLOWER
DRAWN	BW	07/011/2016		
CHECK				
ENGINEER				
MANUFACTURING		CONTROL		TITLE GL-8 GEARED TURBO GENERAL ASSEMBLY 20" CONE
APPROVED				
SIZE	CAGE CODE	DWG NUMBER	REV	
A		GL8-WX-01	02	
SCALE			SHEET	1 OF 1


REVISION HISTORY			
REV	DESCRIPTION	DATE	APPROVED
1	AIR OUTLET VERTICALLY UP	5/27/2016	
2	ROUND PING FROM 0.25 INCH TO 0.125 INCH CONVERTED FROM MM TO INCHES	7/11/2016	



- NOTES:
- BLOWER OUTLET ANGLE ADJUSTABLE EVERY 15° RADially.
 - BLOWER INSTALLED BY EXPANSION BOLTS.

DIMENSIONS & WEIGHTS BY MOTOR SIZE					
MOTOR	"A"	"B"	"C"	"H"	WEIGHT (LBS)
950HP	105.51	234.25	74.80	86.81	15,609
1075HP	105.51	234.25	74.80	86.81	15,829



DRAWING IS FOR REFERENCE ONLY UNLESS SPECIFIED AS RELEASED.		APPROVALS		 <p>LONE STAR BLOWER</p>	
DRAWN	BW	07/011/2016			
CHECK					
ENGINEER					
MANUFACTURING				<p>TITLE</p> <p>GL-8 GEARED TURBO GENERAL ASSEMBLY 24" CONE</p>	
CONTROL					
APPROVED					
SIZE	A	DWG NUMBER	GL8-WX-01	REV	02
SCALE				SHEET	1 OF 1