

# MAX100

Gearless High Speed Turbo Blower



**LONE STAR**  
TURBO

## MODEL MAX100-C040

### Standard Specifications

|                         |  |
|-------------------------|--|
| Gas                     | Air Only                                 |
| Flow Range              | 100% to 45% of Rated Flow*               |
| Maximum Case Pressure   | 35 PSIG / 2.4 bar                        |
| VFD (integral)          | Vacon, KEB, Yaskawa                      |
| Stages                  | Single Stage                             |
| Power Driver Options    | Integral Permanent Magnet Electric Motor |
| Cooling                 | Self Cooled Air Cooled                   |
| Bearings                | NSTB+ Air Foil                           |
| Enclosure               | Standard                                 |
| Sound Level             | 75 dB @ 3 feet free field                |
| Filtration Rating (std) | 99% at 2 micron, or as required          |

### Control Options

|                    |  |
|--------------------|--|
| Control Methods    | Speed Control, Blow Off Control, Pressure, Flow                      |
| Local Controller   | sLOC™ Standard - Custom for Allen Bradley, Modicon, Siemens or Other |
| HMI                | sLOC™ Standard or Custom HMI   |
| Remote Monitoring  | sLINK™ or Custom   |
| Control Set Points | Pressure, Flow, Power, Custom Input                                  |

### Standard Materials of Construction

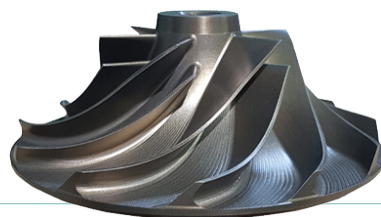
|                  |   |
|------------------|---|
| Casing           | A356 Cast Aluminum                        |
| Volute           | A356 Cast Aluminum                        |
| Bearings         | Inconel with Teflon, Nano Silver Coatings |
| Impeller         | 5 Axis Machined anodized 7075 Aluminum    |
| Shaft            | Titanium alloy with Sm2CO17 Magnets       |
| Blower Base Skid | ASTM A36 Structural Steel                 |
| Isolation Pads   | Adjustable Feet with Mounting Anchor      |
| Finish           | Powder Coated Cabinet                     |

### Optional Testing & Certifications

|                     |                                   |
|---------------------|-----------------------------------|
| Electrical          | UL 508A, UL 1450, CSA, CE, IEE519 |
| Hazardous Location  | Not Classified                    |
| Balancing           | ISO 1940 - G2.5, ~4W/N API        |
| Noise Level         | OSHA 1910.95, ISO 2151:2004       |
| Performance Testing | ASME PTC-10, PTC-13, ISO 5389     |

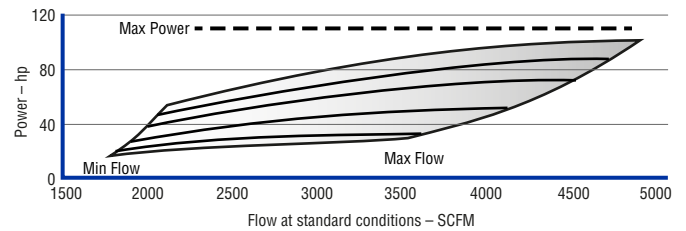
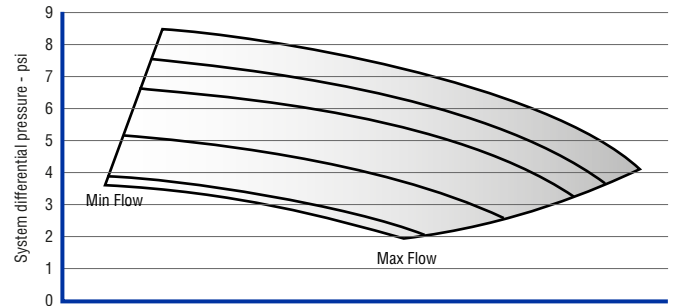
### Standard Options

- High and Low Ambient Temperature
- Separated Electrical and Mechanical Enclosure
- Flanged Intake
- Outdoor Enclosure
- Dual and Duplex Options
- Harmonic Filter



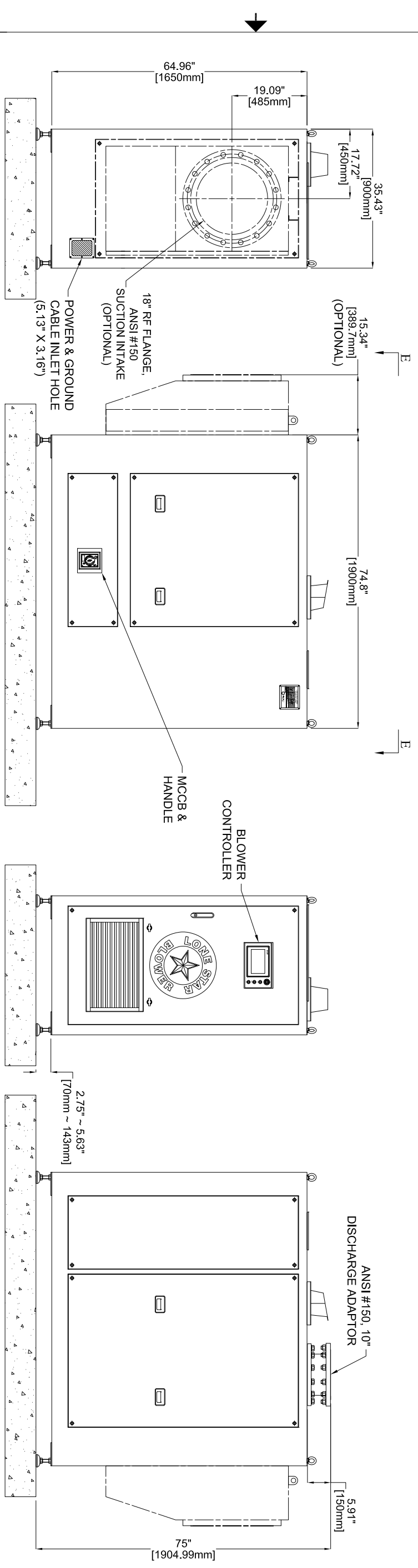
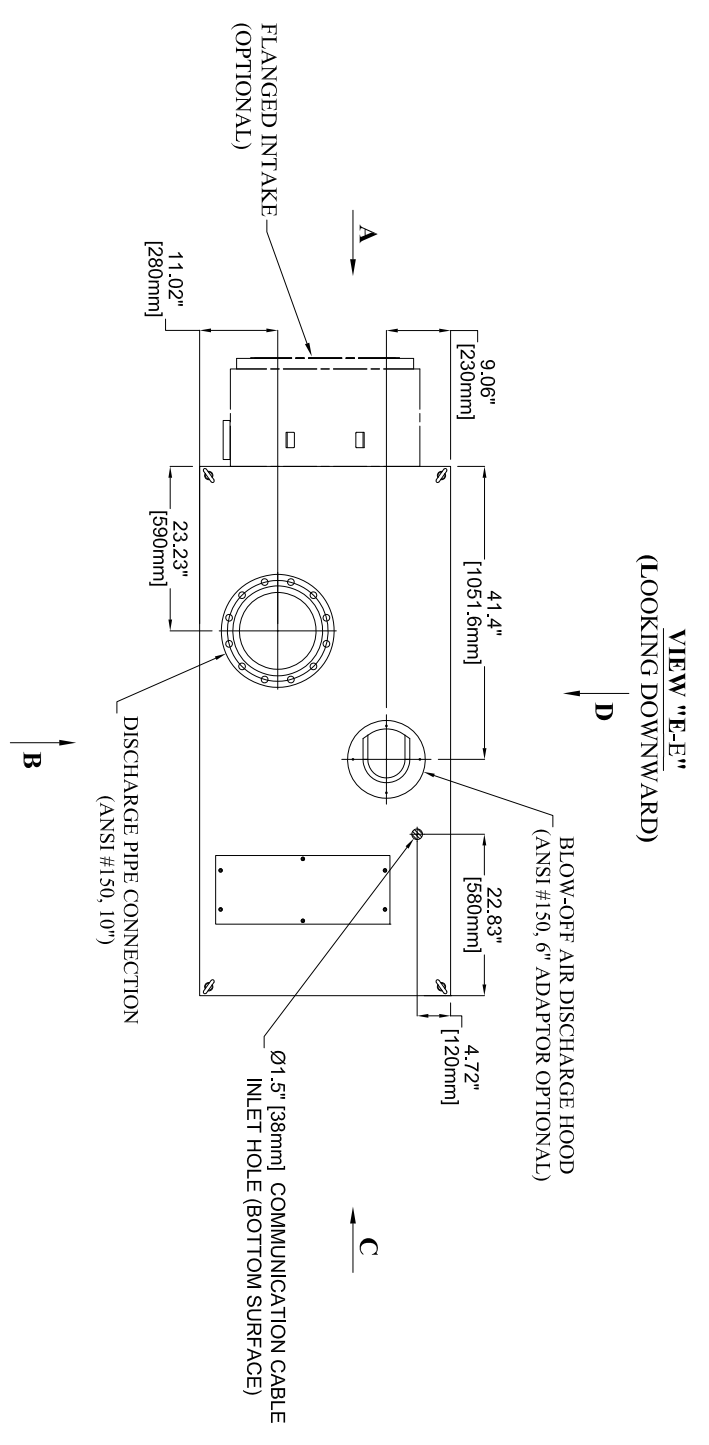
### Service

Air and Pressure



\* Information is approximate and can change without notice  
\* Performance Based on 1 Atm, 68F/20C, 36% RH and 3550 rpm

| REVISION HISTORY |             |      |          |
|------------------|-------------|------|----------|
| REV              | DESCRIPTION | DATE | APPROVED |
|                  |             |      |          |



ALL DIMENSIONS ARE SUBJECT TO CHANGE WITHOUT NOTICE.  
PLEASE CONSULT WITH LONE STAR PRIOR TO DESIGNING AROUND PARTICULAR EQUIPMENT.

| MODELS                     | WEIGHT             |
|----------------------------|--------------------|
| MAX100-C040 LOUVER         | 1,984 LBS (900 KG) |
| MAX100-C040 FLANGED INTAKE | 2,084 LBS (945 KG) |

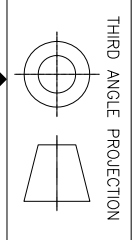
UNLESS OTHERWISE SPECIFIED  
DO NOT SCALE

LONE STAR BLOWER PROPRIETARY RIGHTS ARE INCLUDED HEREIN. THIS INFORMATION MAY NOT BE COPIED, TRANSFERRED, OR DISCLOSED, EXCEPT AS AUTHORIZED BY LONE STAR BLOWER.

DRAWING IS FOR REFERENCE ONLY  
UNLESS SPECIFIED AS RELEASED.



| APPROVALS             |     | TITLE     |                    |
|-----------------------|-----|-----------|--------------------|
| DRAWN                 | JMC | DT SERIES | BLOWER MAX100-C040 |
| CHECK                 |     |           |                    |
| ENGINEER              |     |           |                    |
| MANUFACTURING CONTROL |     | SCALE     | REV                |
| APPROVED              |     | A         | 0                  |



| SIZE | CAGE CODE | DWG NUMBER  | REV |
|------|-----------|-------------|-----|
| A    |           | MAX100-C040 | 0   |