

MAX200

Gearless High Speed Turbo Blower



MODEL MAX200-C060/C070/C080

Service

Standard Specifications

| | |
|-------------------------|--|
| Gas | Air Only |
| Flow Range | 100% to 45% of Rated Flow* |
| Maximum Case Pressure | 35 PSIG / 2.4 bar |
| VFD (integral) | Vacon, KEB, Yaskawa |
| Stages | Single Stage |
| Power Driver Options | Integral Permanent Magnet Electric Motor |
| Cooling | Self Cooled Air Cooled |
| Bearings | NSTB+ Air Foil |
| Enclosure | Standard |
| Sound Level | 75 dB @ 3 feet free field |
| Filtration Rating (std) | 99% at 2 micron, or as required |

Control Options

| | |
|--------------------|--|
| Control Methods | Speed Control, Blow Off Control, Pressure, Flow |
| Local Controller | sLOC™ Standard - Custom for Allen Bradley, Modicon, Siemens or Other |
| HMI | sLOC™ Standard or Custom HMI |
| Remote Monitoring | sLINK™ or Custom |
| Control Set Points | Pressure, Flow, Power, Custom Input |

Standard Materials of Construction

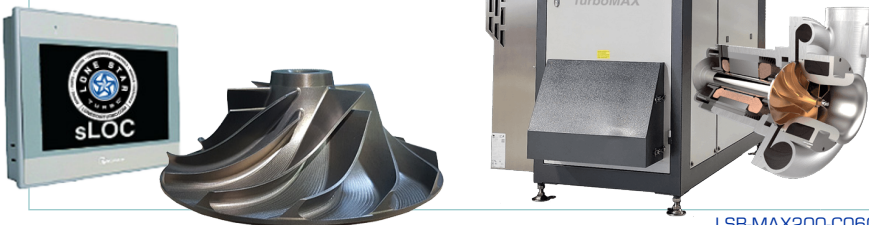
| | |
|------------------|---|
| Casing | A356 Cast Aluminum |
| Volute | A356 Cast Aluminum |
| Bearings | Inconel with Teflon, Nano Silver Coatings |
| Impeller | 5 Axis Machined anodized 7075 Aluminum |
| Shaft | Titanium alloy with Sm2CO17 Magnets |
| Blower Base Skid | ASTM A36 Structural Steel |
| Isolation Pads | Adjustable Feet with Mounting Anchor |
| Finish | Powder Coated Cabinet |

Optional Testing & Certifications

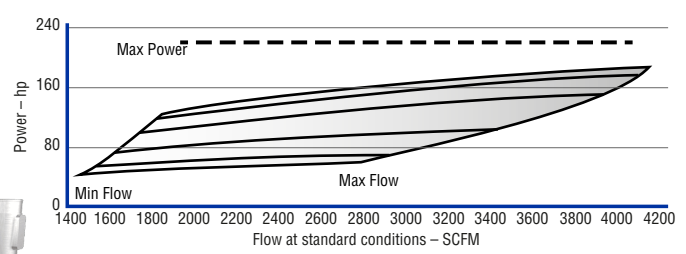
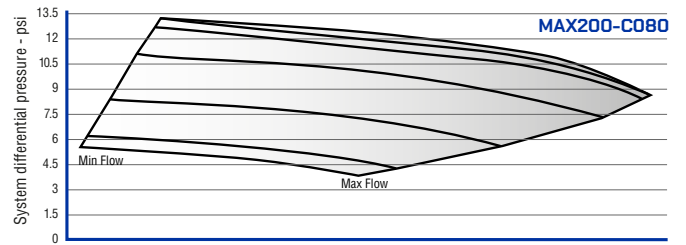
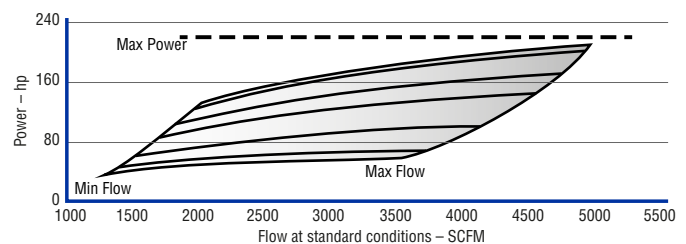
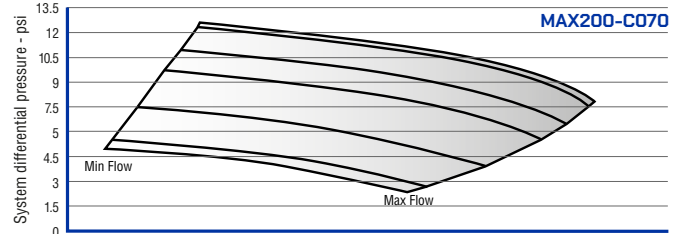
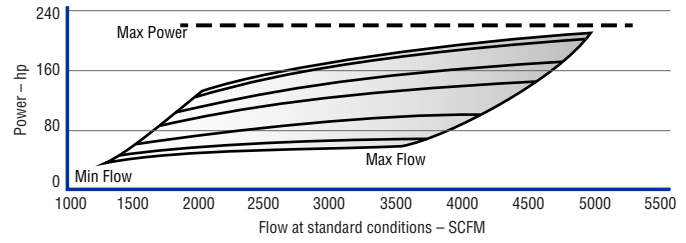
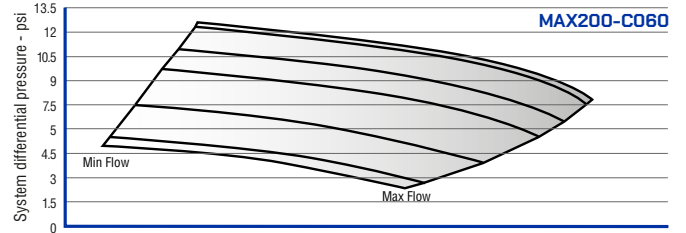
| | |
|---------------------|-------------------------------------|
| Electrical | UL 508A, UL 1450, CSA, CE, IEEEE519 |
| Hazardous Location | Not Classified |
| Balancing | ISO 1940 - G2.5, ~4W/N API |
| Noise Level | OSHA 1910.95, ISO 2151:2004 |
| Performance Testing | ASME PTC-10, PTC-13, ISO 5389 |

Standard Options

- High and Low Ambient Temperature
- Separated Electrical and Mechanical Enclosure
- Dual and Duplex Options
- Flanged Intake
- Outdoor Enclosure
- Harmonic Filter



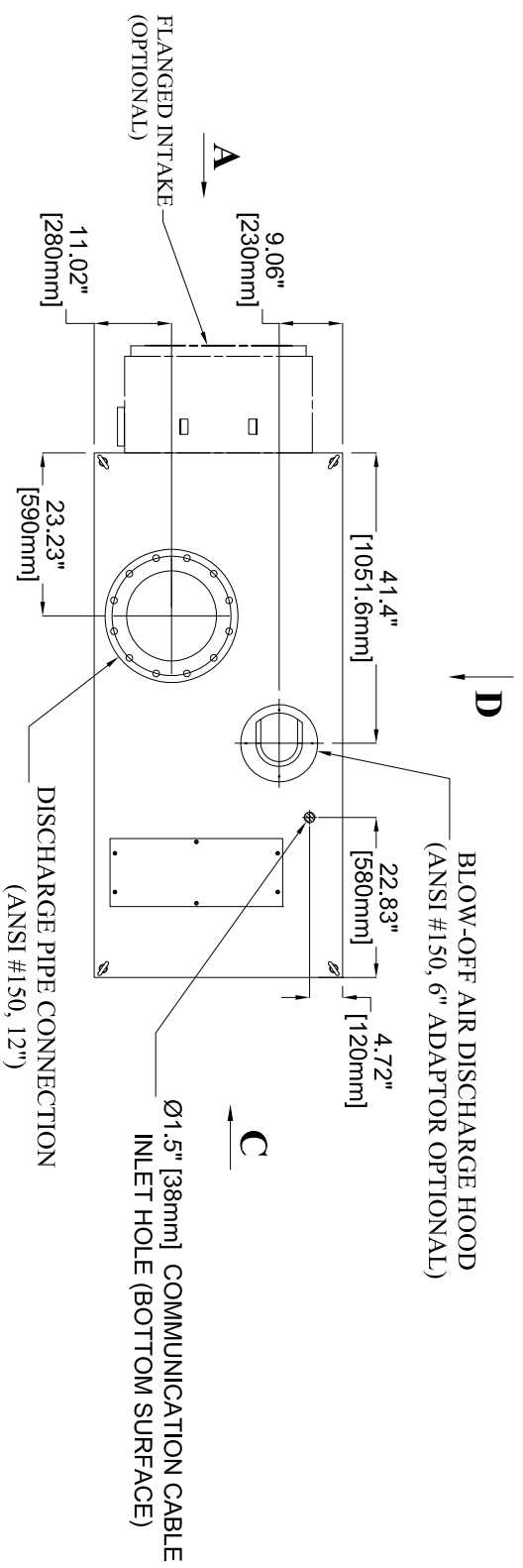
Air and Pressure



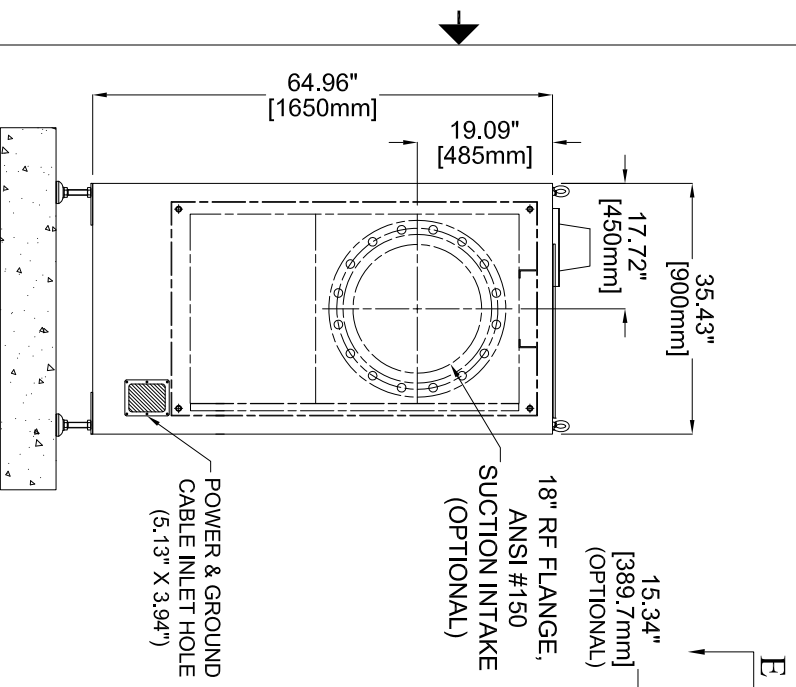
* Information is approximate and can change without notice
 * Performance Based on 1 Atm, 68F/20C, 36% RH and 3550 rpm

| REVISION HISTORY | | | |
|------------------|-------------|------|----------|
| REV | DESCRIPTION | DATE | APPROVED |
| | | | |

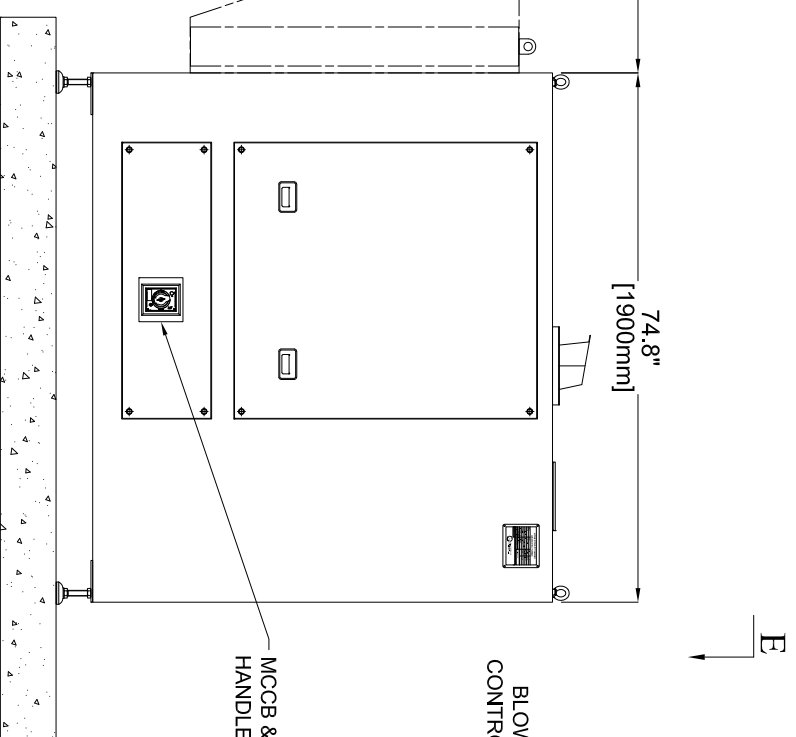
VIEW "E-E"
(LOOKING DOWNWARD)



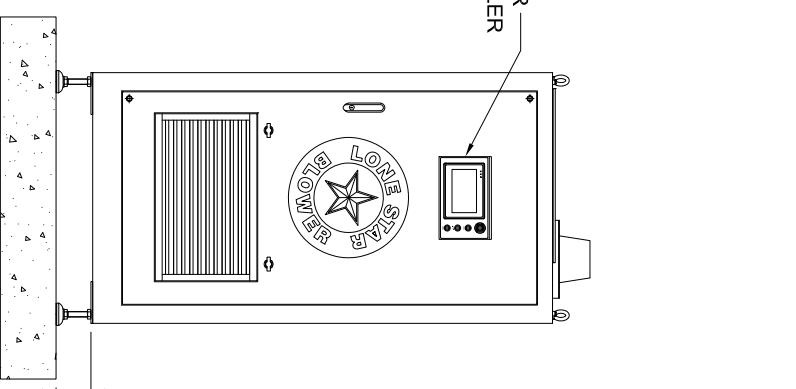
VIEW "A"
(REAR SIDE)



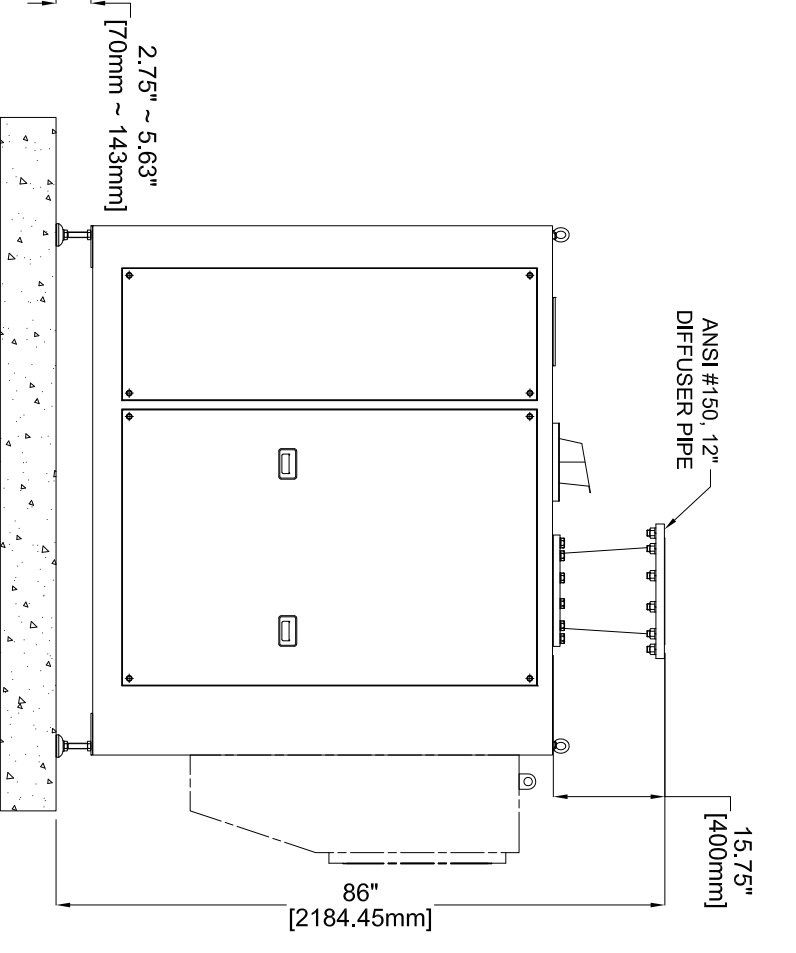
VIEW "B"
(LEFT SIDE)



VIEW "C"
(FRONT SIDE)



VIEW "D"
(RIGHT SIDE)



ALL DIMENSIONS ARE SUBJECT TO CHANGE WITHOUT NOTICE.
PLEASE CONSULT WITH LONE STAR PRIOR TO DESIGNING AROUND PARTICULAR EQUIPMENT.

| MODELS | WEIGHT |
|-----------------------------------|--------------------|
| MAX200-C060 ~ C080 LOUVER | 2,050 LBS (930 KG) |
| MAX200-C060 ~ C080 FLANGED INTAKE | 2,150 LBS (975 KG) |

UNLESS OTHERWISE SPECIFIED
DO NOT SCALE

LONE STAR BLOWER PROPRIETARY RIGHTS ARE INCLUDED HEREIN. THIS INFORMATION MAY NOT BE COPIED, TRANSFERRED, OR DISCLOSED, EXCEPT AS AUTHORIZED BY LONE STAR BLOWER.



| DRAWING IS FOR REFERENCE ONLY UNLESS SPECIFIED AS RELEASED. | | APPROVALS | | TITLE | |
|--|-----|-----------|------------|-------------------------|-----|
| DRAWN | JMC | DATE | 06/04/2021 | DT SERIES | |
| CHECK | | | | BLOWER MAX200-C060~C080 | |
| ENGINEER | | | | | |
| MANUFACTURING | | | | | |
| CONTROL | | | | | |
| APPROVED | | | | | |
| THIRD ANGLE PROJECTION | | SIZE | CAGE CODE | DWG NUMBER | REV |
| | | A | | MAX200-C060~C080 | 0 |
| | | SCALE | | SHEET 1 OF 1 | |