

MAX300

Gearless High Speed Turbo Blower



LONE STAR
TURBO

MODEL MAX300-C040

Standard Specifications

| | |
|-------------------------|--|
| Gas | Air Only |
| Flow Range | 100% to 45% of Rated Flow* |
| Maximum Case Pressure | 35 PSIG / 2.4 bar |
| VFD (integral) | Vacon, KEB, Yaskawa |
| Stages | Single Stage |
| Power Driver Options | Integral Permanent Magnet Electric Motor |
| Cooling | Self Cooled Air Cooled |
| Bearings | NSTB+ Air Foil |
| Enclosure | Standard |
| Sound Level | 75 dB @ 3 feet free field |
| Filtration Rating (std) | 99% at 2 micron, or as required |

Control Options

| | |
|--------------------|--|
| Control Methods | Speed Control, Blow Off Control, Pressure, Flow |
| Local Controller | sLOC™ Standard - Custom for Allen Bradley, Modicon, Siemens or Other |
| HMI | sLOC™ Standard or Custom HMI |
| Remote Monitoring | sLINK™ or Custom |
| Control Set Points | Pressure, Flow, Power, Custom Input |

Standard Materials of Construction

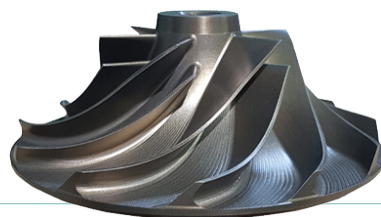
| | |
|------------------|---|
| Casing | A356 Cast Aluminum |
| Volute | A356 Cast Aluminum |
| Bearings | Inconel with Teflon, Nano Silver Coatings |
| Impeller | 5 Axis Machined anodized 7075 Aluminum |
| Shaft | Titanium alloy with Sm2CO17 Magnets |
| Blower Base Skid | ASTM A36 Structural Steel |
| Isolation Pads | Adjustable Feet with Mounting Anchor |
| Finish | Powder Coated Cabinet |

Optional Testing & Certifications

| | |
|---------------------|------------------------------------|
| Electrical | UL 508A, UL 1450, CSA, CE, IEEE519 |
| Hazardous Location | Not Classified |
| Balancing | ISO 1940 - G2.5, ~4W/N API |
| Noise Level | OSHA 1910.95, ISO 2151:2004 |
| Performance Testing | ASME PTC-10, PTC-13, ISO 5389 |

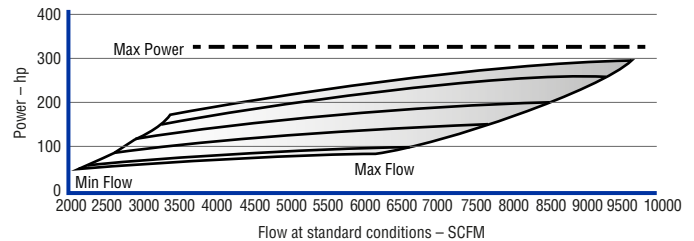
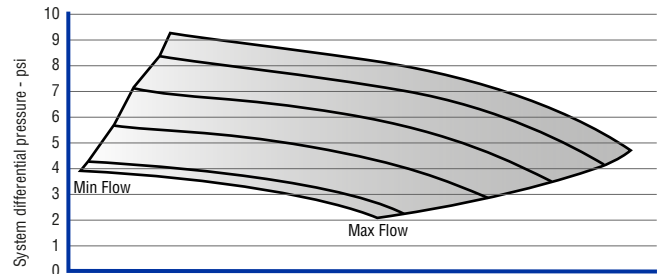
Standard Options

- High and Low Ambient Temperature
- Separated Electrical and Mechanical Enclosure
- Flanged Intake
- Outdoor Enclosure
- Dual and Duplex Options
- Harmonic Filter



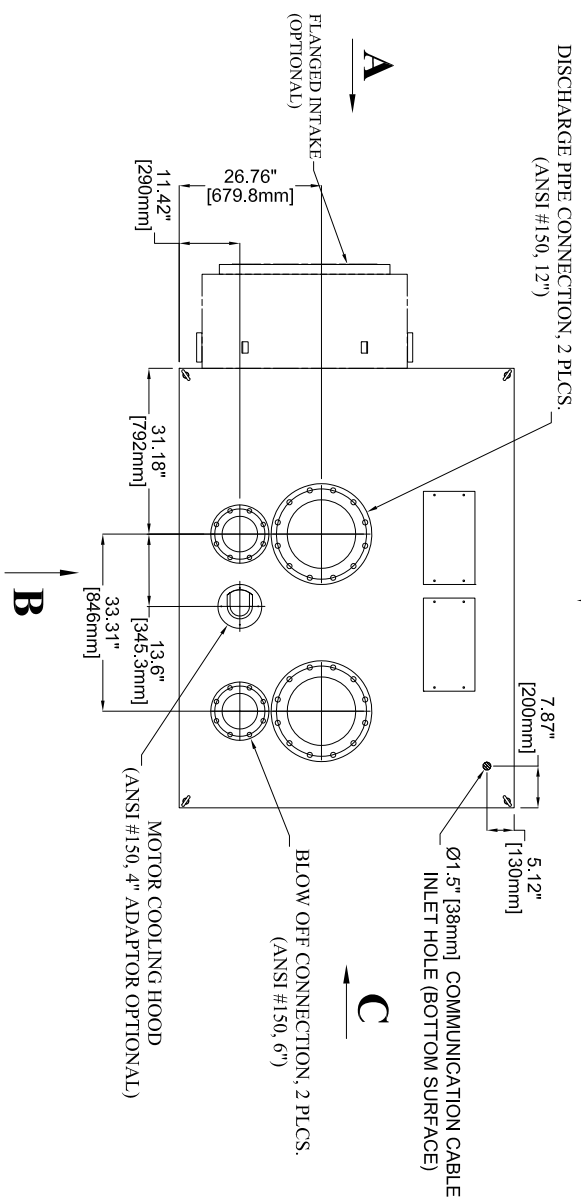
Service

Air and Pressure

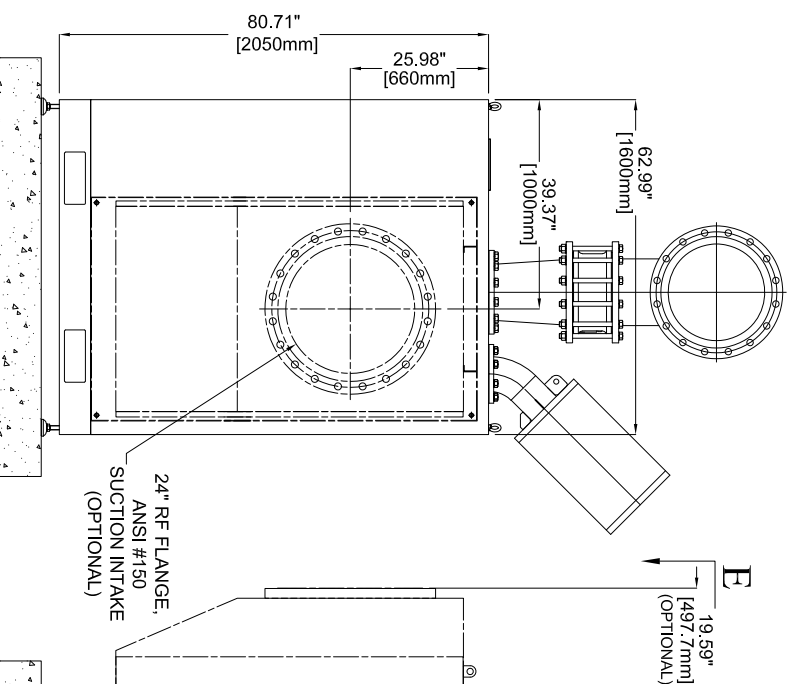


* Information is approximate and can change without notice
* Performance Based on 1 Atm, 68F/20C, 36% RH and 3550 rpm

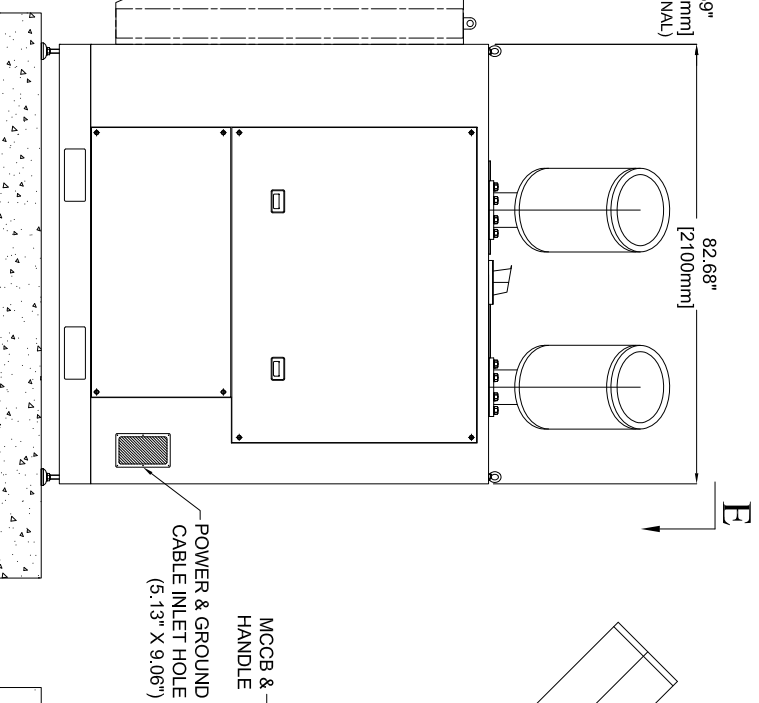
VIEW "E-E"
(LOOKING DOWNWARD)



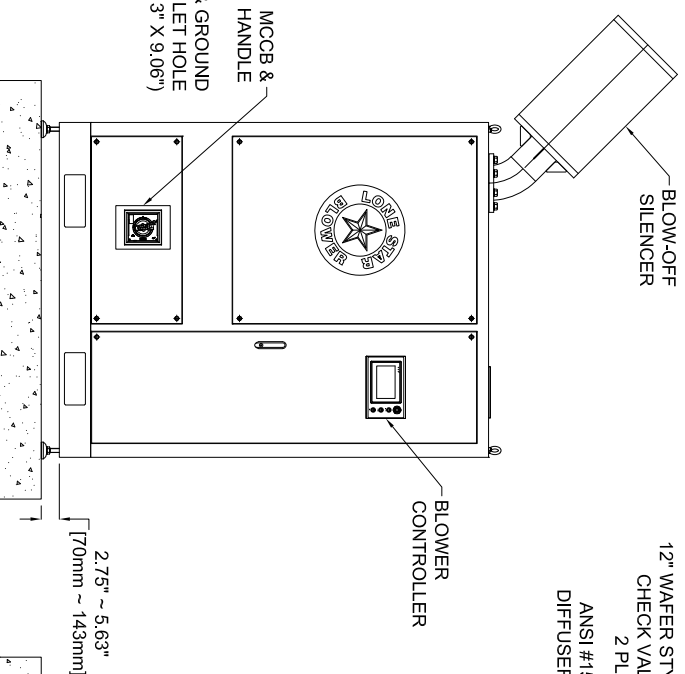
VIEW "A"
(REAR SIDE)



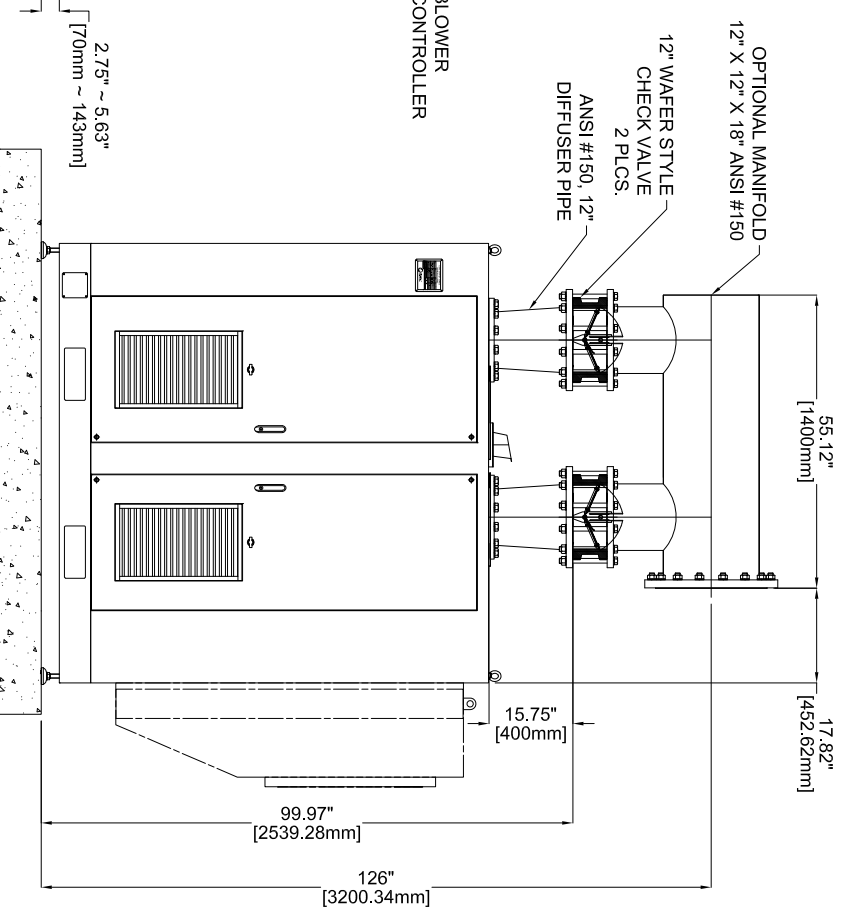
VIEW "B"
(LEFT SIDE)



VIEW "C"
(FRONT SIDE)



VIEW "D"
(RIGHT SIDE)



| REVISION HISTORY | | |
|------------------|-------------|------|
| REV | DESCRIPTION | DATE |
| | | |

ALL DIMENSIONS ARE SUBJECT TO CHANGE WITHOUT NOTICE.
PLEASE CONSULT WITH LONE STAR PRIOR TO DESIGNING AROUND PARTICULAR EQUIPMENT.

| MODELS | WEIGHT |
|----------------------------|----------------------|
| MAX300-C040 LOUVER | 4,300 LBS (1,950 KG) |
| MAX300-C040 FLANGED INTAKE | 4,500 LBS (2,041 KG) |

UNLESS OTHERWISE SPECIFIED
DO NOT SCALE

LONE STAR BLOWER PROPRIETARY RIGHTS ARE INCLUDED HEREIN. THIS INFORMATION MAY NOT BE COPIED, TRANSFERRED, OR DISCLOSED, EXCEPT AS AUTHORIZED BY LONE STAR BLOWER.

| DRAWING IS FOR REFERENCE ONLY UNLESS SPECIFIED AS RELEASED. | |
|--|-----|
| APPROVALS | |
| DRAWN | JMC |
| CHECK | |
| ENGINEER | |
| MANUFACTURING | |
| CONTROL | |
| APPROVED | |



TITLE
DT SERIES
BLOWER MAX300-C040T

| SIZE | CAGE CODE | DWG NUMBER | REV |
|------|-----------|--------------|-----|
| A | | MAX300-C040T | 0 |